



ELECTRONIC COPY

LG782610400 Report verification at igi.org



March 9, 2026 IGI Report Number LG782610400 Description LABORATORY GROWN DIAMOND Shape and Cutting Style PRINCESS CUT Measurements 6.91 X 6.88 X 4.91 MM GRADING RESULTS Carat Weight 2.05 CARATS Color Grade E Clarity Grade VVS 2

LABORATORY GROWN DIAMOND REPORT

March 9, 2026 IGI Report Number LG782610400 Description LABORATORY GROWN DIAMOND Shape and Cutting Style PRINCESS CUT Measurements 6.91 X 6.88 X 4.91 MM

GRADING RESULTS

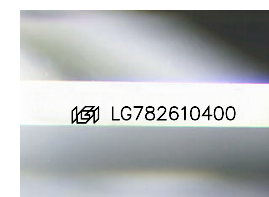
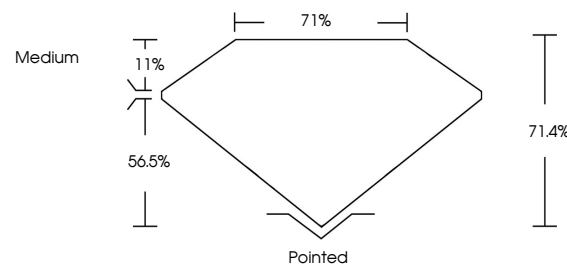
Carat Weight 2.05 CARATS Color Grade E Clarity Grade VVS 2

ADDITIONAL GRADING INFORMATION

Polish EXCELLENT Symmetry EXCELLENT Fluorescence NONE Inscription(s) IGI LG782610400

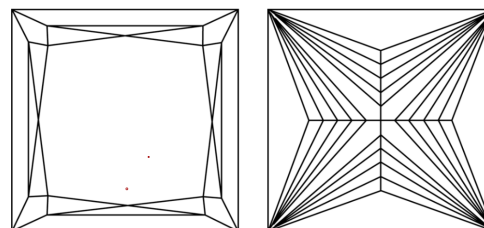
Comments: This Laboratory Grown Diamond was created by Chemical Vapor Deposition (CVD) growth process. Type IIa

PROPORTIONS



Sample Image Used

CLARITY CHARACTERISTICS



KEY TO SYMBOLS

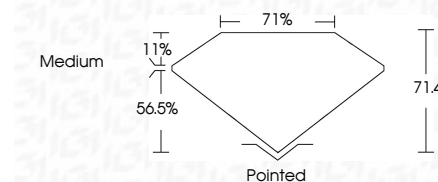
Red symbols indicate internal characteristics. Green symbols indicate external characteristics.

COLOR

D E F G H I J Faint Very Light Light

CLARITY

FL IF VVS 1-2 VS 1-2 SI 1-2 I 1-3 Flawless Internally Flawless Very Very Slightly Included Very Slightly Included Slightly Included Included



ADDITIONAL GRADING INFORMATION

Polish EXCELLENT Symmetry EXCELLENT Fluorescence NONE Inscription(s) IGI LG782610400 Comments: This Laboratory Grown Diamond was created by Chemical Vapor Deposition (CVD) growth process. Type IIa



IGI



March 9, 2026 IGI Report No LG782610400 PRINCESS CUT 6.91 X 6.88 X 4.91 MM 2.05 CARATS E VS 2 71.4% 71% Medium Pointed EXCELLENT EXCELLENT NONE NONE IGI LG782610400 Comments: This Laboratory Grown Diamond was created by Chemical Vapor Deposition (CVD) growth process. Type IIa

Certified SUSTAINABILITY RATED DIAMOND SCS GLOBAL SERVICES All certified diamonds come with an individual certificate, ONLY available at an accredited retailer. FOR THE SUSTAINABILITY RATED CERTIFICATE, SCAN HERE

