



**ELECTRONIC COPY**

LG782610321  
Report verification at igi.org

**LABORATORY GROWN DIAMOND REPORT**

March 11, 2026  
IGI Report Number **LG782610321**  
Description **LABORATORY GROWN DIAMOND**  
Shape and Cutting Style **CUT CORNERED RECTANGULAR MODIFIED BRILLIANT**  
Measurements **8.29 X 5.57 X 3.89 MM**

**GRADING RESULTS**

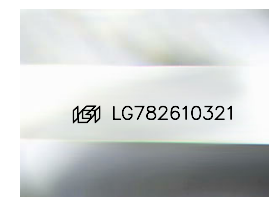
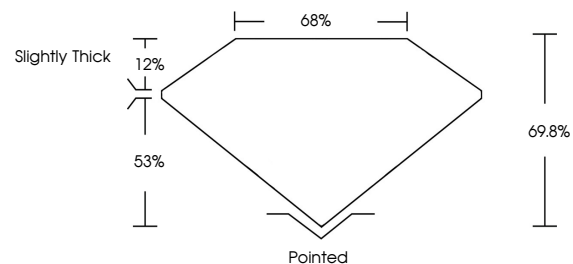
Carat Weight **1.55 CARAT**  
Color Grade **E**  
Clarity Grade **VS 1**

**ADDITIONAL GRADING INFORMATION**

Polish **EXCELLENT**  
Symmetry **EXCELLENT**  
Fluorescence **NONE**  
Inscription(s) **IGI LG782610321**

Comments: This Laboratory Grown Diamond was created by Chemical Vapor Deposition (CVD) growth process.  
Type IIa

**PROPORTIONS**



Sample Image Used

**COLOR**

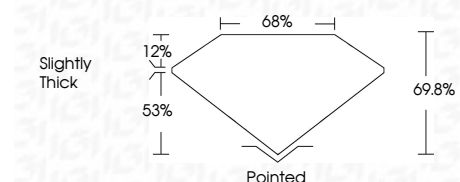
D E F G H I J Faint Very Light Light

**CLARITY**

FL	IF	VS <sup>1-2</sup>	VS <sup>1-2</sup>	SI <sup>1-2</sup>	I <sup>1-3</sup>
Flawless	Internally Flawless	Very Very Slightly Included	Very Slightly Included	Slightly Included	Included



March 11, 2026  
IGI Report Number **LG782610321**  
Description **LABORATORY GROWN DIAMOND**  
Shape and Cutting Style **CUT CORNERED RECTANGULAR MODIFIED BRILLIANT**  
Measurements **8.29 X 5.57 X 3.89 MM**  
**GRADING RESULTS**  
Carat Weight **1.55 CARAT**  
Color Grade **E**  
Clarity Grade **VS 1**



**ADDITIONAL GRADING INFORMATION**

Polish **EXCELLENT**  
Symmetry **EXCELLENT**  
Fluorescence **NONE**  
Inscription(s) **IGI LG782610321**  
Comments: This Laboratory Grown Diamond was created by Chemical Vapor Deposition (CVD) growth process.  
Type IIa



March 11, 2026  
IGI Report No **LG782610321**  
**CUT CORNERED RECT. MODIFIED BRILLIANT**  
**8.29 X 5.57 X 3.89 MM**  
Carat Weight **1.55 CARAT**  
Color Grade **E**  
Clarity Grade **VS 1**  
Table **68%**  
Girdle **65%**  
Culet **Slightly Thick**  
Polish **Pointed**  
Symmetry **EXCELLENT**  
Fluorescence **NONE**  
Inscription(s) **IGI LG782610321**  
Comments: This Laboratory Grown Diamond was created by Chemical Vapor Deposition (CVD) growth process.  
Type IIa