



ELECTRONIC COPY

LG782610058
Report verification at igi.org



April 13, 2026

IGI Report Number **LG782610058**

Description **LABORATORY GROWN DIAMOND**

Shape and Cutting Style **ROUND BRILLIANT**

Measurements **8.70 - 8.74 X 5.40 MM**

GRADING RESULTS

Carat Weight **2.51 CARATS**

Color Grade **F**

Clarity Grade **VVS 1**

Cut Grade **IDEAL**

April 13, 2026

IGI Report Number **LG782610058**

Description **LABORATORY GROWN DIAMOND**

Shape and Cutting Style **ROUND BRILLIANT**

Measurements **8.70 - 8.74 X 5.40 MM**

GRADING RESULTS

Carat Weight **2.51 CARATS**

Color Grade **F**

Clarity Grade **VVS 1**

Cut Grade **IDEAL**

ADDITIONAL GRADING INFORMATION

Polish **EXCELLENT**

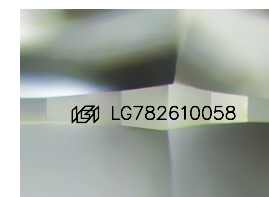
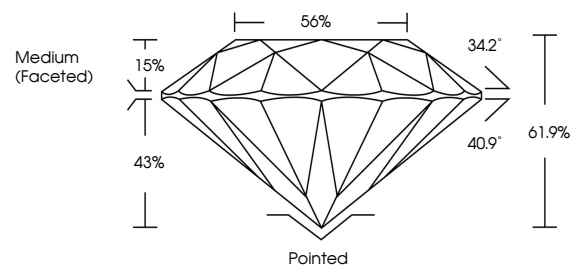
Symmetry **EXCELLENT**

Fluorescence **NONE**

Inscription(s) **LG782610058**

Comments: This Laboratory Grown Diamond was created by Chemical Vapor Deposition (CVD) growth process. Type IIa

PROPORTIONS



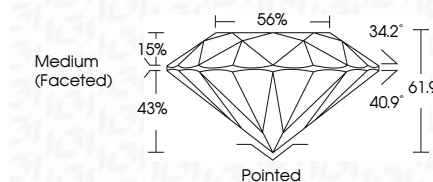
Sample Image Used

COLOR

D E F G H I J Faint Very Light Light

CLARITY

FL	IF	VS ¹⁻²	VS ¹⁻²	SI ¹⁻²	I ¹⁻³
Flawless	Internally Flawless	Very Very Slightly Included	Very Slightly Included	Slightly Included	Included



ADDITIONAL GRADING INFORMATION

Polish **EXCELLENT**

Symmetry **EXCELLENT**

Fluorescence **NONE**

Inscription(s) **LG782610058**

Comments: This Laboratory Grown Diamond was created by Chemical Vapor Deposition (CVD) growth process. Type IIa



IGI



April 13, 2026
IGI Report No LG782610058
ROUND BRILLIANT

8.70 - 8.74 X 5.40 MM

2.51 CARATS
F

VVS 1
IDEAL

61.9%
56%

Medium (Faceted)

Pointed
EXCELLENT
EXCELLENT
NONE
NONE

LG782610058

Comments: This Laboratory Grown Diamond was created by Chemical Vapor Deposition (CVD) growth process. Type IIa