



**ELECTRONIC COPY**

LG782609696  
Report verification at igi.org



March 16, 2026

IGI Report Number **LG782609696**

Description **LABORATORY GROWN DIAMOND**

Shape and Cutting Style **ROUND BRILLIANT**

Measurements **7.54 - 7.58 X 4.54 MM**

**GRADING RESULTS**

Carat Weight **1.59 CARAT**

Color Grade **F**

Clarity Grade **VS 1**

Cut Grade **IDEAL**

March 16, 2026  
IGI Report Number **LG782609696**  
Description **LABORATORY GROWN DIAMOND**  
Shape and Cutting Style **ROUND BRILLIANT**  
Measurements **7.54 - 7.58 X 4.54 MM**

**GRADING RESULTS**

Carat Weight **1.59 CARAT**

Color Grade **F**

Clarity Grade **VS 1**

Cut Grade **IDEAL**

**ADDITIONAL GRADING INFORMATION**

Polish **EXCELLENT**

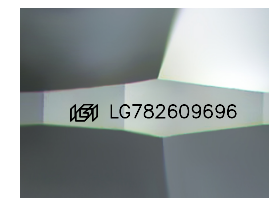
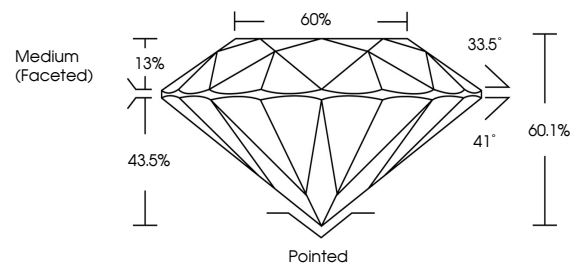
Symmetry **EXCELLENT**

Fluorescence **NONE**

Inscription(s) **IGI LG782609696**

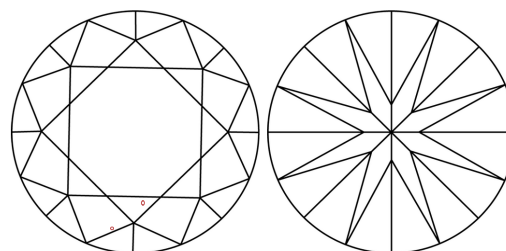
Comments: This Laboratory Grown Diamond was created by Chemical Vapor Deposition (CVD) growth process.  
Type IIa

**PROPORTIONS**



Sample Image Used

**CLARITY CHARACTERISTICS**



**KEY TO SYMBOLS**

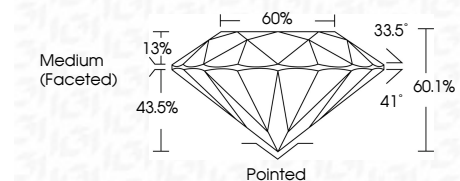
Red symbols indicate internal characteristics.  
Green symbols indicate external characteristics.

**COLOR**

D E F G H I J Faint Very Light Light

**CLARITY**

FL	IF	VS <sup>1-2</sup>	VS <sup>1-2</sup>	SI <sup>1-2</sup>	I <sup>1-3</sup>
Flawless	Internally Flawless	Very Very Slightly Included	Very Slightly Included	Slightly Included	Included



**ADDITIONAL GRADING INFORMATION**

Polish **EXCELLENT**

Symmetry **EXCELLENT**

Fluorescence **NONE**

Inscription(s) **IGI LG782609696**

Comments: This Laboratory Grown Diamond was created by Chemical Vapor Deposition (CVD) growth process.  
Type IIa



**IGI**



March 16, 2026  
IGI Report No LG782609696  
ROUND BRILLIANT

1.59 CARAT  
F

7.54 - 7.58 X 4.54 MM  
Color Grade  
Clarity Grade VS 1  
Depth IDEAL  
Table 60.1%  
Girdle 60%  
Medium (Faceted)

Pointed  
Polish EXCELLENT  
Symmetry EXCELLENT  
Fluorescence NONE  
Inscription(s) IGI LG782609696

Comments: This Laboratory Grown Diamond was created by Chemical Vapor Deposition (CVD) growth process.  
Type IIa