



**ELECTRONIC COPY**

LG782609461  
Report verification at igi.org



March 18, 2026

IGI Report Number **LG782609461**

Description **LABORATORY GROWN DIAMOND**

Shape and Cutting Style **ROUND BRILLIANT**

Measurements **7.40 - 7.46 X 4.62 MM**

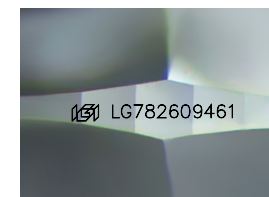
**GRADING RESULTS**

Carat Weight **1.58 CARAT**

Color Grade **F**

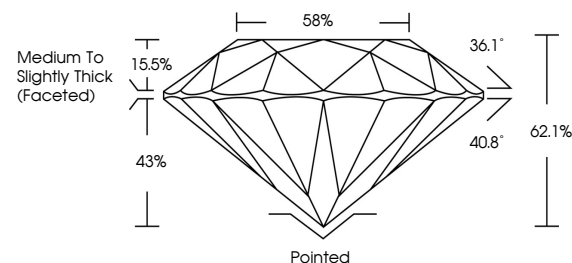
Clarity Grade **VS 1**

Cut Grade **IDEAL**

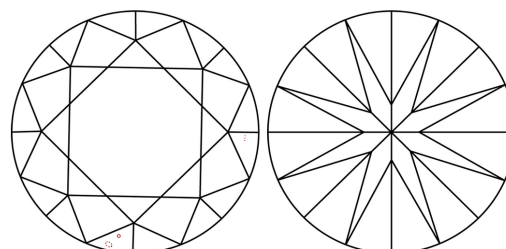


Sample Image Used

**PROPORTIONS**



**CLARITY CHARACTERISTICS**



**KEY TO SYMBOLS**

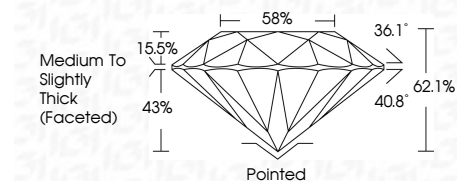
Red symbols indicate internal characteristics.  
Green symbols indicate external characteristics.

**COLOR**

D E F G H I J Faint Very Light Light

**CLARITY**

FL	IF	VS <sup>1-2</sup>	VS <sup>1-2</sup>	SI <sup>1-2</sup>	I <sup>1-3</sup>
Flawless	Internally Flawless	Very Very Slightly Included	Very Slightly Included	Slightly Included	Included



**ADDITIONAL GRADING INFORMATION**

Polish **EXCELLENT**

Symmetry **EXCELLENT**

Fluorescence **NONE**

Inscription(s) **IGI LG782609461**

Comments: This Laboratory Grown Diamond was created by Chemical Vapor Deposition (CVD) growth process. Type IIa



**IGI**



March 18, 2026  
IGI Report No LG782609461  
**ROUND BRILLIANT**

**7.40 - 7.46 X 4.62 MM**

1.58 CARAT  
F

Color Grade  
VS 1  
IDEAL

Clarity Grade  
VS 1  
IDEAL

Depth  
62.1%

Table  
58%

Grade  
Medium To Slightly Thick (Faceted)

Culet  
Pointed  
EXCELLENT

Polish  
EXCELLENT

Symmetry  
EXCELLENT

Fluorescence  
NONE

Inscription(s)  
IGI LG782609461

Comments: This Laboratory Grown Diamond was created by Chemical Vapor Deposition (CVD) growth process. Type IIa