



ELECTRONIC COPY

LG782608582
Report verification at igi.org



March 27, 2026
IGI Report Number **LG782608582**
Description **LABORATORY GROWN DIAMOND**
Shape and Cutting Style **ROUND ROSE CUT**
Measurements **7.47 - 7.55 X 1.81 MM**
GRADING RESULTS
Carat Weight **1.05 CARAT**
Color Grade **VERY LIGHT BROWN**
Clarity Grade **VVS 2**

March 27, 2026
IGI Report Number **LG782608582**
Description **LABORATORY GROWN DIAMOND**
Shape and Cutting Style **ROUND ROSE CUT**
Measurements **7.47 - 7.55 X 1.81 MM**

GRADING RESULTS

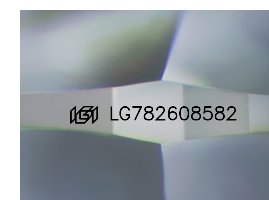
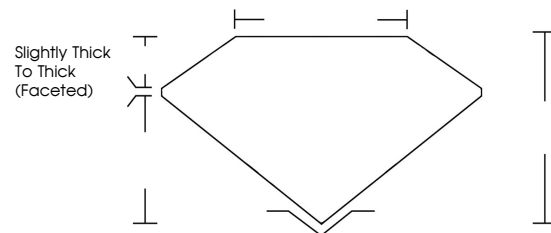
Carat Weight **1.05 CARAT**
Color Grade **VERY LIGHT BROWN**
Clarity Grade **VVS 2**

ADDITIONAL GRADING INFORMATION

Polish **VERY GOOD**
Symmetry **VERY GOOD**
Fluorescence **NONE**
Inscription(s) **IGI LG782608582**

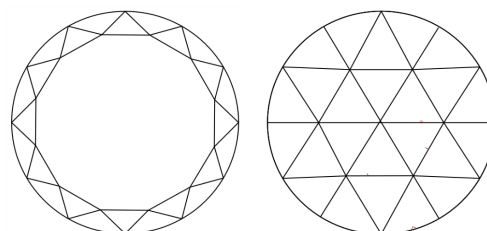
Comments: This Laboratory Grown Diamond was created by Chemical Vapor Deposition (CVD) growth process.

PROPORTIONS



Sample Image Used

CLARITY CHARACTERISTICS



KEY TO SYMBOLS

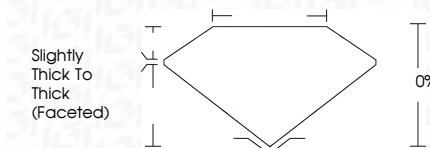
Red symbols indicate internal characteristics.
Green symbols indicate external characteristics.

COLOR

D E F G H I J Faint Very Light Light

CLARITY

FL	IF	VVS ¹⁻²	VS ¹⁻²	SI ¹⁻²	I ¹⁻³
Flawless	Internally Flawless	Very Very Slightly Included	Very Slightly Included	Slightly Included	Included



ADDITIONAL GRADING INFORMATION

Polish **VERY GOOD**
Symmetry **VERY GOOD**
Fluorescence **NONE**
Inscription(s) **IGI LG782608582**
Comments: This Laboratory Grown Diamond was created by Chemical Vapor Deposition (CVD) growth process.



IGI



March 27, 2026
IGI Report No LG782608582
ROUND ROSE CUT
7.47 - 7.55 X 1.81 MM
1.05 CARAT
VERY LIGHT BROWN
VVS 2
Slightly Thick To Thick (Faceted)
VERY GOOD
VERY GOOD
NONE
IGI LG782608582
Comments: This Laboratory Grown Diamond was created by Chemical Vapor Deposition (CVD) growth process.