



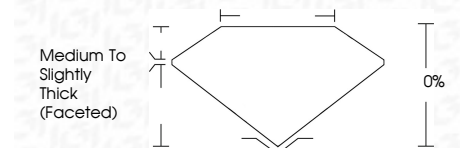
ELECTRONIC COPY

LG782608573
Report verification at igi.org



March 27, 2026
IGI Report Number **LG782608573**
Description **LABORATORY GROWN DIAMOND**
Shape and Cutting Style **ROUND ROSE CUT**
Measurements **6.95 - 6.97 X 2.35 MM**

GRADING RESULTS
Carat Weight **1.14 CARAT**
Color Grade **LIGHT YELLOWISH BROWN**
Clarity Grade **VS 1**



ADDITIONAL GRADING INFORMATION
Polish **VERY GOOD**
Symmetry **VERY GOOD**
Fluorescence **NONE**
Inscription(s) **IGI LG782608573**
Comments: This Laboratory Grown Diamond was created by Chemical Vapor Deposition (CVD) growth process.



March 27, 2026
IGI Report No **LG782608573**
ROUND ROSE CUT
Carat Weight **1.14 CARAT**
Color Grade **LIGHT YELLOWISH BROWN**
Clarity Grade **VS 1**
Depth **0%**
Girdle **Medium to Slightly Thick (Faceted)**
Culet **VERY GOOD**
Polish **VERY GOOD**
Symmetry **VERY GOOD**
Fluorescence **NONE**
Inscription(s) **IGI LG782608573**
Comments: This Laboratory Grown Diamond was created by Chemical Vapor Deposition (CVD) growth process.

LABORATORY GROWN DIAMOND REPORT

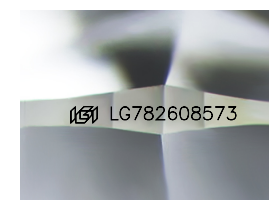
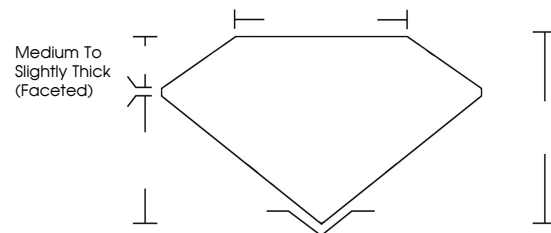
March 27, 2026
IGI Report Number **LG782608573**
Description **LABORATORY GROWN DIAMOND**
Shape and Cutting Style **ROUND ROSE CUT**
Measurements **6.95 - 6.97 X 2.35 MM**

GRADING RESULTS
Carat Weight **1.14 CARAT**
Color Grade **LIGHT YELLOWISH BROWN**
Clarity Grade **VS 1**

ADDITIONAL GRADING INFORMATION
Polish **VERY GOOD**
Symmetry **VERY GOOD**
Fluorescence **NONE**
Inscription(s) **IGI LG782608573**

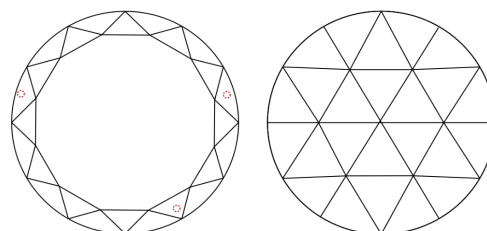
Comments: This Laboratory Grown Diamond was created by Chemical Vapor Deposition (CVD) growth process.

PROPORTIONS



Sample Image Used

CLARITY CHARACTERISTICS



KEY TO SYMBOLS

Red symbols indicate internal characteristics.
Green symbols indicate external characteristics.

COLOR

D E F G H I J Faint Very Light Light

CLARITY

FL IF VS¹⁻² VS¹⁻² SI¹⁻² I¹⁻³

Flawless Internally Flawless Very Very Slightly Included Very Slightly Included Slightly Included Included

