



ELECTRONIC COPY

LG782608566
Report verification at igi.org



March 27, 2026
IGI Report Number **LG782608566**
Description **LABORATORY GROWN DIAMOND**
Shape and Cutting Style **ROUND ROSE CUT**
Measurements **9.56 - 9.68 X 2.74 MM**
GRADING RESULTS
Carat Weight **2.51 CARATS**
Color Grade **FANCY LIGHT BROWN**
Clarity Grade **VVS 2**

March 27, 2026
IGI Report Number **LG782608566**
Description **LABORATORY GROWN DIAMOND**
Shape and Cutting Style **ROUND ROSE CUT**
Measurements **9.56 - 9.68 X 2.74 MM**

GRADING RESULTS

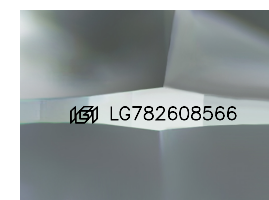
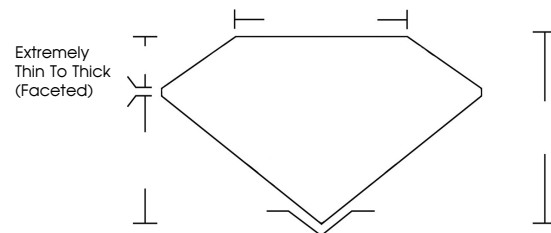
Carat Weight **2.51 CARATS**
Color Grade **FANCY LIGHT BROWN**
Clarity Grade **VVS 2**

ADDITIONAL GRADING INFORMATION

Polish **VERY GOOD**
Symmetry **GOOD**
Fluorescence **NONE**
Inscription(s) **IGI LG782608566**

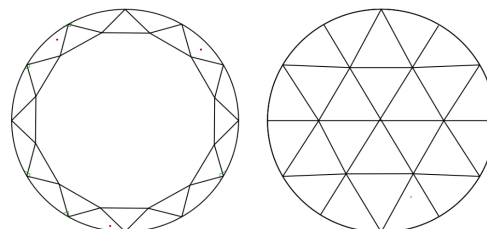
Comments: This Laboratory Grown Diamond was created by Chemical Vapor Deposition (CVD) growth process.

PROPORTIONS



Sample Image Used

CLARITY CHARACTERISTICS



KEY TO SYMBOLS

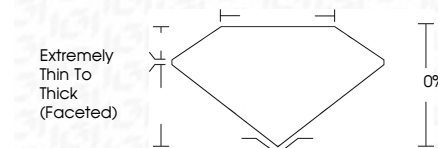
Red symbols indicate internal characteristics.
Green symbols indicate external characteristics.

COLOR

D E F G H I J Faint Very Light Light

CLARITY

FL	IF	VVS ¹⁻²	VS ¹⁻²	SI ¹⁻²	I ¹⁻³
Flawless	Internally Flawless	Very Very Slightly Included	Very Slightly Included	Slightly Included	Included



ADDITIONAL GRADING INFORMATION

Polish **VERY GOOD**
Symmetry **GOOD**
Fluorescence **NONE**
Inscription(s) **IGI LG782608566**
Comments: This Laboratory Grown Diamond was created by Chemical Vapor Deposition (CVD) growth process.



March 27, 2026
IGI Report No **LG782608566**
ROUND ROSE CUT
9.56 - 9.68 X 2.74 MM
Carat Weight **2.51 CARATS**
Color Grade **FANCY LIGHT BROWN**
Clarity Grade **VVS 2**
Depth **0%**
Table **0%**
Girdle **Extremely Thin To Thick (Faceted)**
Culet **VERY GOOD**
Polish **GOOD**
Symmetry **GOOD**
Fluorescence **NONE**
Inscription(s) **IGI LG782608566**
Comments: This Laboratory Grown Diamond was created by Chemical Vapor Deposition (CVD) growth process.