



**ELECTRONIC COPY**

LG782608565  
Report verification at [igi.org](http://igi.org)



March 27, 2026  
IGI Report Number **LG782608565**  
Description **LABORATORY GROWN DIAMOND**  
Shape and Cutting Style **ROUND ROSE CUT**  
Measurements **7.99 - 7.97 X 2.13 MM**  
**GRADING RESULTS**  
Carat Weight **1.31 CARAT**  
Color Grade **FANCY LIGHT BROWN**  
Clarity Grade **VVS 2**

March 27, 2026  
IGI Report Number **LG782608565**  
Description **LABORATORY GROWN DIAMOND**  
Shape and Cutting Style **ROUND ROSE CUT**  
Measurements **7.99 - 7.97 X 2.13 MM**

**GRADING RESULTS**

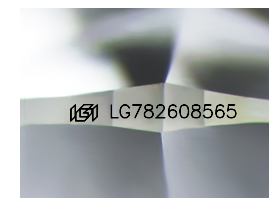
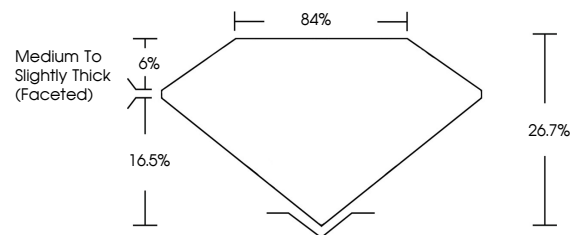
Carat Weight **1.31 CARAT**  
Color Grade **FANCY LIGHT BROWN**  
Clarity Grade **VVS 2**

**ADDITIONAL GRADING INFORMATION**

Polish **VERY GOOD**  
Symmetry **GOOD**  
Fluorescence **NONE**  
Inscription(s) **IGI LG782608565**

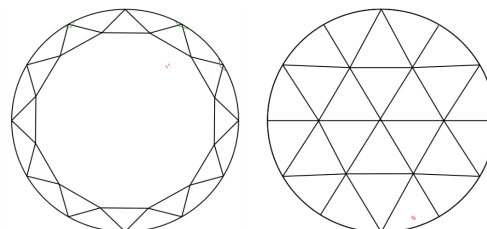
Comments: This Laboratory Grown Diamond was created by Chemical Vapor Deposition (CVD) growth process.

**PROPORTIONS**



Sample Image Used

**CLARITY CHARACTERISTICS**



**KEY TO SYMBOLS**

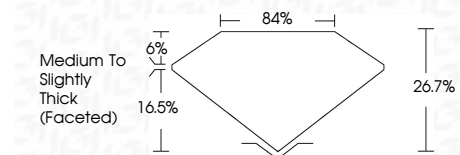
Red symbols indicate internal characteristics.  
Green symbols indicate external characteristics.

**COLOR**

D E F G H I J Faint Very Light Light

**CLARITY**

FL	IF	VVS <sup>1-2</sup>	VS <sup>1-2</sup>	SI <sup>1-2</sup>	I <sup>1-3</sup>
Flawless	Internally Flawless	Very Very Slightly Included	Very Slightly Included	Slightly Included	Included



**ADDITIONAL GRADING INFORMATION**

Polish **VERY GOOD**  
Symmetry **GOOD**  
Fluorescence **NONE**  
Inscription(s) **IGI LG782608565**  
Comments: This Laboratory Grown Diamond was created by Chemical Vapor Deposition (CVD) growth process.



**IGI**



March 27, 2026  
IGI Report No **LG782608565**  
**ROUND ROSE CUT**  
1.31 CARAT  
Carat Weight  
Color Grade **FANCY LIGHT BROWN**  
Clarity Grade **VVS 2**  
Depth **26.7%**  
Table **84%**  
Girdle **Medium to Slightly Thick (Faceted)**  
Culet **VERY GOOD**  
Polish **GOOD**  
Symmetry **GOOD**  
Fluorescence **NONE**  
Inscription(s) **IGI LG782608565**  
Comments: This Laboratory Grown Diamond was created by Chemical Vapor Deposition (CVD) growth process.