



**ELECTRONIC COPY**

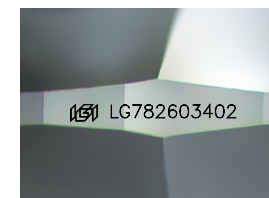
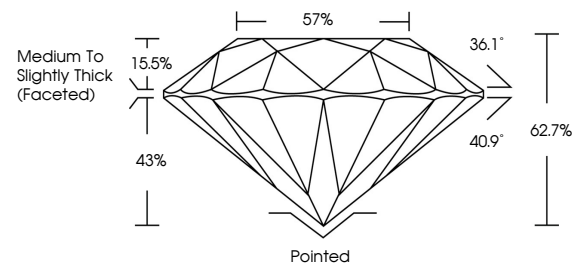
LG782603402  
Report verification at igi.org



March 11, 2026  
IGI Report Number **LG782603402**  
Description **LABORATORY GROWN DIAMOND**  
Shape and Cutting Style **ROUND BRILLIANT**  
Measurements **6.86 - 6.89 X 4.31 MM**  
**GRADING RESULTS**  
Carat Weight **1.26 CARAT**  
Color Grade **E**  
Clarity Grade **VS 1**  
Cut Grade **EXCELLENT**

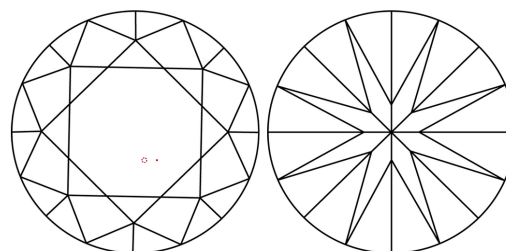
March 11, 2026  
IGI Report Number **LG782603402**  
Description **LABORATORY GROWN DIAMOND**  
Shape and Cutting Style **ROUND BRILLIANT**  
Measurements **6.86 - 6.89 X 4.31 MM**

**PROPORTIONS**



Sample Image Used

**CLARITY CHARACTERISTICS**



**KEY TO SYMBOLS**

Red symbols indicate internal characteristics.  
Green symbols indicate external characteristics.

**GRADING RESULTS**

Carat Weight **1.26 CARAT**  
Color Grade **E**  
Clarity Grade **VS 1**  
Cut Grade **EXCELLENT**

**ADDITIONAL GRADING INFORMATION**

Polish **EXCELLENT**  
Symmetry **EXCELLENT**  
Fluorescence **NONE**  
Inscription(s) **IGI LG782603402**

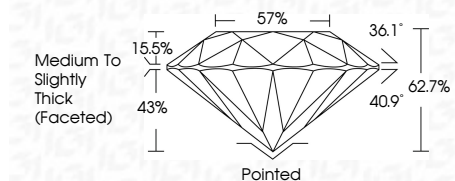
Comments: This Laboratory Grown Diamond was created by Chemical Vapor Deposition (CVD) growth process.  
Type IIa

**COLOR**

D E F G H I J Faint Very Light Light

**CLARITY**

FL	IF	VS <sup>1-2</sup>	VS <sup>1-2</sup>	SI <sup>1-2</sup>	I <sup>1-3</sup>
Flawless	Internally Flawless	Very Very Slightly Included	Very Slightly Included	Slightly Included	Included



**ADDITIONAL GRADING INFORMATION**

Polish **EXCELLENT**  
Symmetry **EXCELLENT**  
Fluorescence **NONE**  
Inscription(s) **IGI LG782603402**  
Comments: This Laboratory Grown Diamond was created by Chemical Vapor Deposition (CVD) growth process.  
Type IIa



March 11, 2026  
IGI Report No LG782603402  
**ROUND BRILLIANT**  
6.86 - 6.89 X 4.31 MM  
1.26 CARAT  
E  
Color Grade  
VS 1  
EXCELLENT  
62.7%  
57%  
Medium To Slightly Thick (Faceted)  
Pointed  
EXCELLENT  
EXCELLENT  
NONE  
IGI LG782603402  
Comments: This Laboratory Grown Diamond was created by Chemical Vapor Deposition (CVD) growth process.  
Type IIa