



ELECTRONIC COPY

LG781655862
Report verification at igi.org



March 14, 2026
IGI Report Number LG781655862
Description LABORATORY GROWN DIAMOND
Shape and Cutting Style CUT CORNERED RECTANGULAR MODIFIED BRILLIANT
Measurements 11.36 X 7.88 X 5.33 MM
GRADING RESULTS
Carat Weight 4.11 CARATS
Color Grade D
Clarity Grade VVS 2

March 14, 2026
IGI Report Number LG781655862
Description LABORATORY GROWN DIAMOND
Shape and Cutting Style CUT CORNERED RECTANGULAR MODIFIED BRILLIANT
Measurements 11.36 X 7.88 X 5.33 MM

GRADING RESULTS

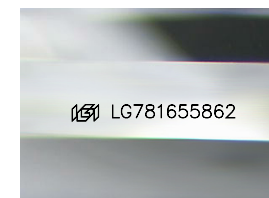
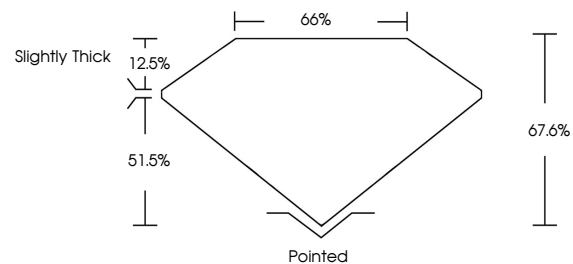
Carat Weight 4.11 CARATS
Color Grade D
Clarity Grade VVS 2

ADDITIONAL GRADING INFORMATION

Polish EXCELLENT
Symmetry EXCELLENT
Fluorescence NONE
Inscription(s) LG781655862

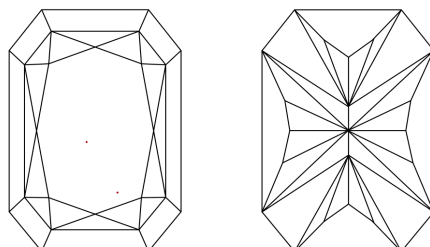
Comments: This Laboratory Grown Diamond was created by Chemical Vapor Deposition (CVD) growth process. Type IIa

PROPORTIONS



Sample Image Used

CLARITY CHARACTERISTICS



KEY TO SYMBOLS

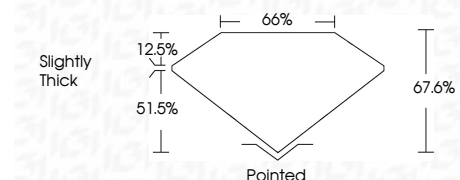
Red symbols indicate internal characteristics.
Green symbols indicate external characteristics.

COLOR

D E F G H I J Faint Very Light Light

CLARITY

FL IF VVS 1-2 VS 1-2 SI 1-2 I 1-3
Flawless Internally Flawless Very Very Slightly Included Very Slightly Included Slightly Included Included



ADDITIONAL GRADING INFORMATION

Polish EXCELLENT
Symmetry EXCELLENT
Fluorescence NONE
Inscription(s) LG781655862
Comments: This Laboratory Grown Diamond was created by Chemical Vapor Deposition (CVD) growth process. Type IIa



March 14, 2026
IGI Report No LG781655862
CUT CORNERED RECT. MODIFIED BRILLIANT
4.11 CARATS
D
11.36 X 7.88 X 5.33 MM
VVS 2
67.6%
65%
Slightly Thick
Pointed
EXCELLENT
EXCELLENT
NONE
Inscription(s) LG781655862
Comments: This Laboratory Grown Diamond was created by Chemical Vapor Deposition (CVD) growth process. Type IIa