



**ELECTRONIC COPY**

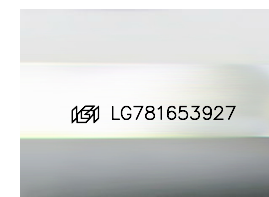
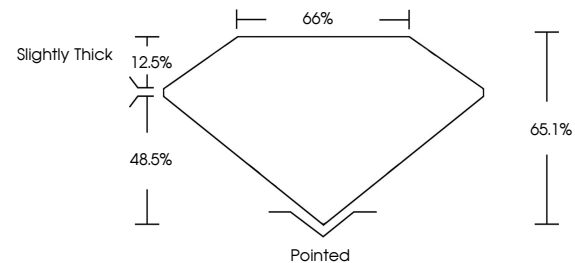
LG781653927  
Report verification at igi.org



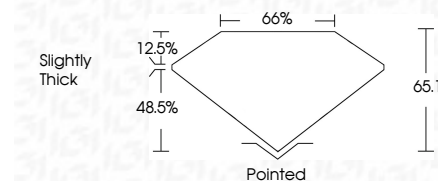
March 14, 2026  
IGI Report Number **LG781653927**  
Description **LABORATORY GROWN DIAMOND**  
Shape and Cutting Style **CUT CORNERED  
RECTANGULAR MODIFIED  
BRILLIANT**  
Measurements **14.31 X 10.48 X 6.82 MM**  
**GRADING RESULTS**  
Carat Weight **9.10 CARATS**  
Color Grade **F**  
Clarity Grade **VVS 2**

March 14, 2026  
IGI Report Number **LG781653927**  
Description **LABORATORY GROWN DIAMOND**  
Shape and Cutting Style **CUT CORNERED RECTANGULAR  
MODIFIED BRILLIANT**  
Measurements **14.31 X 10.48 X 6.82 MM**  
**GRADING RESULTS**  
Carat Weight **9.10 CARATS**  
Color Grade **F**  
Clarity Grade **VVS 2**

**PROPORTIONS**



Sample Image Used



**ADDITIONAL GRADING INFORMATION**

Polish **EXCELLENT**  
Symmetry **EXCELLENT**  
Fluorescence **NONE**  
Inscription(s) **IGI LG781653927**

Comments: This Laboratory Grown Diamond was created by Chemical Vapor Deposition (CVD) growth process. Type IIa

**ADDITIONAL GRADING INFORMATION**

Polish **EXCELLENT**  
Symmetry **EXCELLENT**  
Fluorescence **NONE**  
Inscription(s) **IGI LG781653927**  
Comments: This Laboratory Grown Diamond was created by Chemical Vapor Deposition (CVD) growth process. Type IIa

**COLOR**

D E F G H I J Faint Very Light Light

**CLARITY**

FL	IF	VVS <sup>1-2</sup>	VS <sup>1-2</sup>	SI <sup>1-2</sup>	I <sup>1-3</sup>
Flawless	Internally Flawless	Very Very Slightly Included	Very Slightly Included	Slightly Included	Included



**IGI**



March 14, 2026  
IGI Report No LG781653927  
CUT CORNERED RECT. MODIFIED BRILLIANT  
14.31 X 10.48 X 6.82 MM  
Carat Weight **9.10 CARATS**  
Color Grade **F**  
Clarity Grade **VVS 2**  
Depth **65.1%**  
Table **65%**  
Girdle **Slightly Thick**  
Culet **Pointed**  
Polish **EXCELLENT**  
Symmetry **EXCELLENT**  
Fluorescence **NONE**  
Inscription(s) **IGI LG781653927**  
Comments: This Laboratory Grown Diamond was created by Chemical Vapor Deposition (CVD) growth process. Type IIa