



**ELECTRONIC COPY**

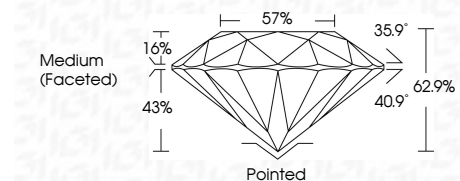
LG781653154  
Report verification at igi.org



March 14, 2026  
IGI Report Number **LG781653154**  
Description **LABORATORY GROWN DIAMOND**  
Shape and Cutting Style **ROUND BRILLIANT**  
Measurements **7.98 - 8.06 X 5.05 MM**

**GRADING RESULTS**

Carat Weight **2.02 CARATS**  
Color Grade **D**  
Clarity Grade **VVS 1**  
Cut Grade **EXCELLENT**



**ADDITIONAL GRADING INFORMATION**

Polish **EXCELLENT**  
Symmetry **EXCELLENT**  
Fluorescence **NONE**  
Inscription(s) **IGI LG781653154**  
Comments: As Grown - No indication of post-growth treatment.  
This Laboratory Grown Diamond was created by High Pressure High Temperature (HPHT) growth process.  
Type II



March 14, 2026  
IGI Report No LG781653154  
**ROUND BRILLIANT**  
2.02 CARATS  
D  
2.02 CARATS  
D  
VVS 1  
EXCELLENT  
62.9%  
57%  
Medium (Faceted)  
Pointed  
EXCELLENT  
EXCELLENT  
NONE  
IGI LG781653154  
Comments: As Grown - No indication of post-growth treatment.  
This Laboratory Grown Diamond was created by High Pressure High Temperature (HPHT) growth process.  
Type II

March 14, 2026  
IGI Report Number **LG781653154**  
Description **LABORATORY GROWN DIAMOND**  
Shape and Cutting Style **ROUND BRILLIANT**  
Measurements **7.98 - 8.06 X 5.05 MM**

**GRADING RESULTS**

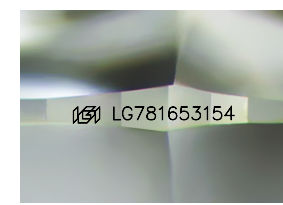
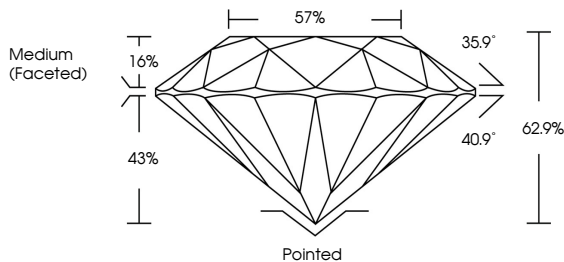
Carat Weight **2.02 CARATS**  
Color Grade **D**  
Clarity Grade **VVS 1**  
Cut Grade **EXCELLENT**

**ADDITIONAL GRADING INFORMATION**

Polish **EXCELLENT**  
Symmetry **EXCELLENT**  
Fluorescence **NONE**  
Inscription(s) **IGI LG781653154**

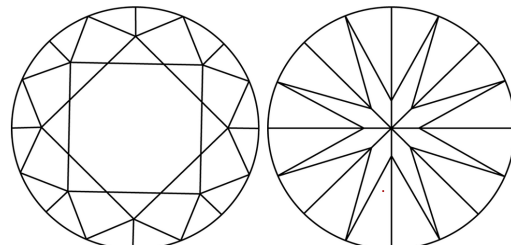
Comments: As Grown - No indication of post-growth treatment.  
This Laboratory Grown Diamond was created by High Pressure High Temperature (HPHT) growth process.  
Type II

**PROPORTIONS**



Sample Image Used

**CLARITY CHARACTERISTICS**



**KEY TO SYMBOLS**

Red symbols indicate internal characteristics.  
Green symbols indicate external characteristics.

**COLOR**

|   |   |   |   |   |   |   |       |            |       |
|---|---|---|---|---|---|---|-------|------------|-------|
| D | E | F | G | H | I | J | Faint | Very Light | Light |
|---|---|---|---|---|---|---|-------|------------|-------|

**CLARITY**

|          |                     |                             |                        |                   |                  |
|----------|---------------------|-----------------------------|------------------------|-------------------|------------------|
| FL       | IF                  | VVS <sup>1-2</sup>          | VS <sup>1-2</sup>      | SI <sup>1-2</sup> | I <sup>1-3</sup> |
| Flawless | Internally Flawless | Very Very Slightly Included | Very Slightly Included | Slightly Included | Included         |

