



ELECTRONIC COPY

LG781652409
Report verification at igi.org



March 12, 2026

IGI Report Number **LG781652409**

Description **LABORATORY GROWN DIAMOND**

Shape and Cutting Style **PRINCESS CUT**

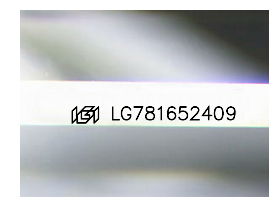
Measurements **5.56 X 5.49 X 3.92 MM**

GRADING RESULTS

Carat Weight **1.03 CARAT**

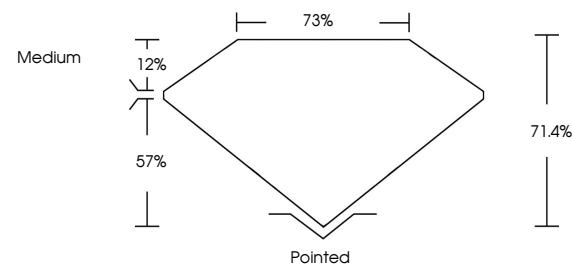
Color Grade **D**

Clarity Grade **VVS 2**

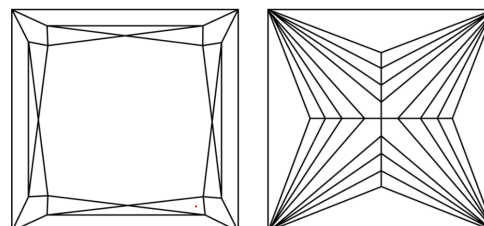


Sample Image Used

PROPORTIONS



CLARITY CHARACTERISTICS



KEY TO SYMBOLS

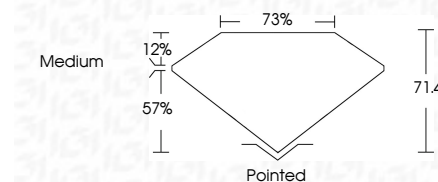
Red symbols indicate internal characteristics.
Green symbols indicate external characteristics.

COLOR

D E F G H I J Faint Very Light Light

CLARITY

FL	IF	VVS ¹⁻²	VS ¹⁻²	SI ¹⁻²	I ¹⁻³
Flawless	Internally Flawless	Very Very Slightly Included	Very Slightly Included	Slightly Included	Included



ADDITIONAL GRADING INFORMATION

Polish **EXCELLENT**

Symmetry **EXCELLENT**

Fluorescence **NONE**

Inscription(s) **IGI LG781652409**

Comments: This Laboratory Grown Diamond was created by Chemical Vapor Deposition (CVD) growth process.
Type IIa



IGI



March 12, 2026
IGI Report No LG781652409
PRINCESS CUT

1.03 CARAT
D

5.56 X 5.49 X 3.92 MM
Color Grade
D

Clarity Grade
VVS 2

Depth 71.4%
Table 57%
Girdle Medium

Pointed
EXCELLENT
EXCELLENT
NONE
IGI LG781652409

Culet
Polish
Symmetry
Fluorescence
Inscription(s)

Comments: This Laboratory Grown Diamond was created by Chemical Vapor Deposition (CVD) growth process.
Type IIa