



ELECTRONIC COPY

LG781650852
Report verification at igi.org



March 12, 2026
IGI Report Number **LG781650852**
Description **LABORATORY GROWN DIAMOND**
Shape and Cutting Style **CUSHION MODIFIED BRILLIANT**
Measurements **10.68 X 8.14 X 5.63 MM**
GRADING RESULTS
Carat Weight **3.72 CARATS**
Color Grade **FANCY INTENSE GREENISH BLUE**
Clarity Grade **VS 1**

LABORATORY GROWN DIAMOND REPORT

March 12, 2026
IGI Report Number **LG781650852**
Description **LABORATORY GROWN DIAMOND**
Shape and Cutting Style **CUSHION MODIFIED BRILLIANT**
Measurements **10.68 X 8.14 X 5.63 MM**

GRADING RESULTS

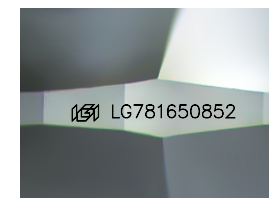
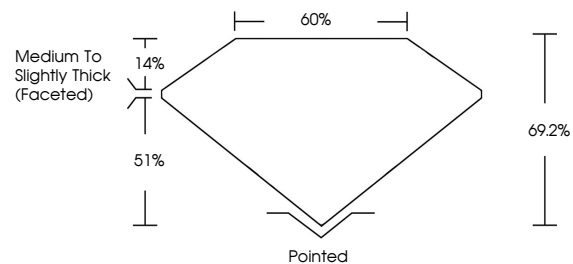
Carat Weight **3.72 CARATS**
Color Grade **FANCY INTENSE GREENISH BLUE**
Clarity Grade **VS 1**

ADDITIONAL GRADING INFORMATION

Polish **EXCELLENT**
Symmetry **EXCELLENT**
Fluorescence **NONE**
Inscription(s) **IGI LG781650852**

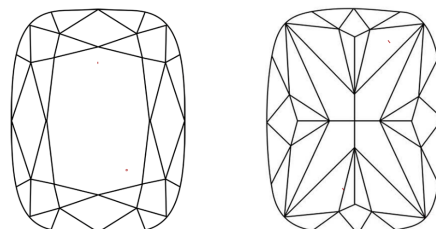
Comments: This Laboratory Grown Diamond was created by Chemical Vapor Deposition (CVD) growth process.
Indications of post-growth treatment.

PROPORTIONS



Sample Image Used

CLARITY CHARACTERISTICS



KEY TO SYMBOLS

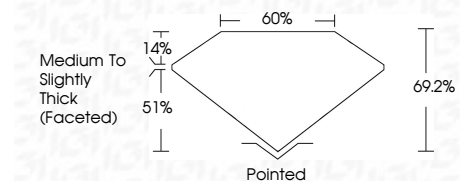
Red symbols indicate internal characteristics.
Green symbols indicate external characteristics.

COLOR

D E F G H I J Faint Very Light Light

CLARITY

FL	IF	VS ¹⁻²	VS ¹⁻²	SI ¹⁻²	I ¹⁻³
Flawless	Internally Flawless	Very Very Slightly Included	Very Slightly Included	Slightly Included	Included



ADDITIONAL GRADING INFORMATION

Polish **EXCELLENT**
Symmetry **EXCELLENT**
Fluorescence **NONE**
Inscription(s) **IGI LG781650852**
Comments: This Laboratory Grown Diamond was created by Chemical Vapor Deposition (CVD) growth process.
Indications of post-growth treatment.



March 12, 2026
IGI Report No LG781650852
CUSHION MODIFIED BRILLIANT
3.72 CARATS
FANCY INTENSE GREENISH BLUE
VS 1
10.68 X 8.14 X 5.63 MM
69.2%
51%
14%
Medium to Slightly Thick (Faceted)
Pointed
EXCELLENT
EXCELLENT
NONE
IGI LG781650852
Comments: This Laboratory Grown Diamond was created by Chemical Vapor Deposition (CVD) growth process.
Indications of post-growth treatment.