



March 10, 2026

IGI Report Number **LG781649714**

**OVAL BRILLIANT
LABORATORY GROWN DIAMOND
7.59 X 5.60 X 3.51 MM**

Carat Weight **0.98 CARAT**
Color Grade **D**
Clarity Grade **VS 2**
Polish **EXCELLENT**
Symmetry **EXCELLENT**
Fluorescence **NONE**
Inscription(s) **IGI LG781649714**

Comments: This Laboratory Grown Diamond was created by Chemical Vapor Deposition (CVD) growth process. Type IIa

LABORATORY GROWN DIAMOND REPORT

March 10, 2026
IGI Report Number **LG781649714**
Description **LABORATORY GROWN DIAMOND**
Shape and Cutting Style **OVAL BRILLIANT**
Measurements **7.59 X 5.60 X 3.51 MM**

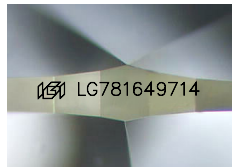
GRADING RESULTS

Carat Weight **0.98 CARAT**
Color Grade **D**
Clarity Grade **VS 2**

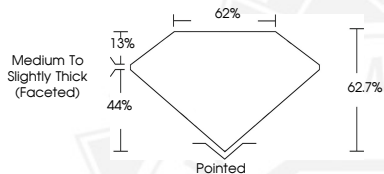
ADDITIONAL GRADING INFORMATION

Polish **EXCELLENT**
Symmetry **EXCELLENT**
Fluorescence **NONE**
Inscription(s) **IGI LG781649714**

Comments: This Laboratory Grown Diamond was created by Chemical Vapor Deposition (CVD) growth process. Type IIa



Sample Image Used



March 10, 2026

IGI Report Number **LG781649714**

**OVAL BRILLIANT
LABORATORY GROWN DIAMOND
7.59 X 5.60 X 3.51 MM**

Carat Weight **0.98 CARAT**
Color Grade **D**
Clarity Grade **VS 2**
Polish **EXCELLENT**
Symmetry **EXCELLENT**
Fluorescence **NONE**
Inscription(s) **IGI LG781649714**

Comments: This Laboratory Grown Diamond was created by Chemical Vapor Deposition (CVD) growth process. Type IIa



THIS DOCUMENT WAS PRODUCED WITH THE FOLLOWING SECURITY MEASURES: SPECIAL DOCUMENT PAPER, INK SCREENS, WATERMARK, BACKGROUND DESIGNS, HOLOGRAM AND OTHER SECURITY FEATURES NOT LISTED AND DO EXCEED DOCUMENT SECURITY INDUSTRY GUIDELINES.