



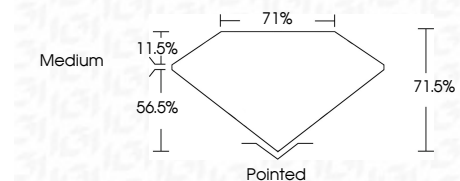
ELECTRONIC COPY

LG781647849 Report verification at igi.org



March 9, 2026 IGI Report Number LG781647849 Description LABORATORY GROWN DIAMOND Shape and Cutting Style PRINCESS CUT Measurements 6.93 X 6.91 X 4.94 MM

GRADING RESULTS Carat Weight 2.05 CARATS Color Grade E Clarity Grade VVS 2



ADDITIONAL GRADING INFORMATION Polish EXCELLENT Symmetry EXCELLENT Fluorescence NONE Inscription(s) LG781647849 Comments: This Laboratory Grown Diamond was created by Chemical Vapor Deposition (CVD) growth process. Type IIa



March 9, 2026 IGI Report No LG781647849 PRINCESS CUT 2.05 CARATS E VVS 2 71.0% 71% Medium Pointed EXCELLENT EXCELLENT NONE LG781647849 Comments: This Laboratory Grown Diamond was created by Chemical Vapor Deposition (CVD) growth process. Type IIa

LABORATORY GROWN DIAMOND REPORT

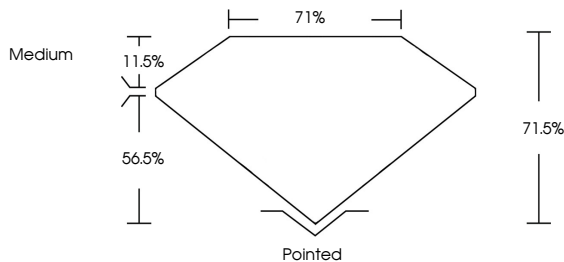
March 9, 2026 IGI Report Number LG781647849 Description LABORATORY GROWN DIAMOND Shape and Cutting Style PRINCESS CUT Measurements 6.93 X 6.91 X 4.94 MM

GRADING RESULTS Carat Weight 2.05 CARATS Color Grade E Clarity Grade VVS 2

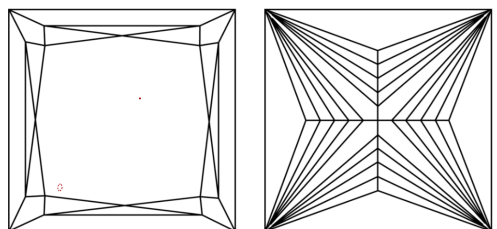
ADDITIONAL GRADING INFORMATION Polish EXCELLENT Symmetry EXCELLENT Fluorescence NONE Inscription(s) LG781647849

Comments: This Laboratory Grown Diamond was created by Chemical Vapor Deposition (CVD) growth process. Type IIa

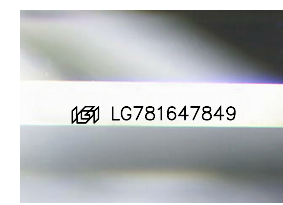
PROPORTIONS



CLARITY CHARACTERISTICS



KEY TO SYMBOLS Red symbols indicate internal characteristics. Green symbols indicate external characteristics.



Sample Image Used

Table for COLOR grading: D, E, F, G, H, I, J, Faint, Very Light, Light

Table for CLARITY grading: FL, IF, VS 1-2, VS 1-2, SI 1-2, I 1-3, Flawless, Internally Flawless, Very Very Slightly Included, Very Slightly Included, Slightly Included, Included

