



ELECTRONIC COPY

LG781645947 Report verification at igi.org



March 19, 2026 IGI Report Number LG781645947 Description LABORATORY GROWN DIAMOND Shape and Cutting Style CUT CORNERED RECTANGULAR MODIFIED BRILLIANT Measurements 11.00 X 7.99 X 5.29 MM GRADING RESULTS Carat Weight 4.03 CARATS Color Grade F Clarity Grade VS 1

March 19, 2026 IGI Report Number LG781645947 Description LABORATORY GROWN DIAMOND Shape and Cutting Style CUT CORNERED RECTANGULAR MODIFIED BRILLIANT Measurements 11.00 X 7.99 X 5.29 MM

GRADING RESULTS

Carat Weight 4.03 CARATS Color Grade F Clarity Grade VS 1

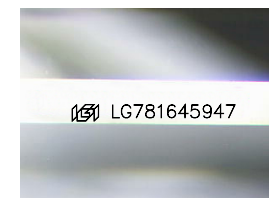
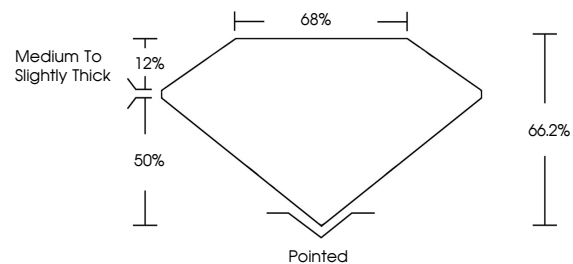
ADDITIONAL GRADING INFORMATION

Polish EXCELLENT Symmetry EXCELLENT Fluorescence NONE

Inscription(s) LG781645947

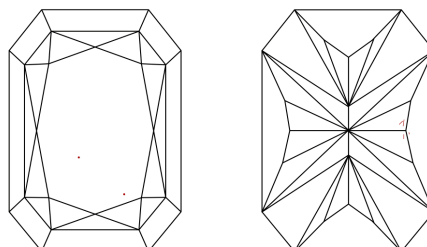
Comments: This Laboratory Grown Diamond was created by Chemical Vapor Deposition (CVD) growth process. Type IIa

PROPORTIONS



Sample Image Used

CLARITY CHARACTERISTICS



KEY TO SYMBOLS

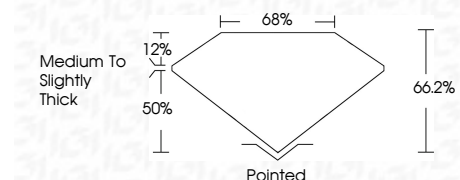
Red symbols indicate internal characteristics. Green symbols indicate external characteristics.

COLOR

D E F G H I J Faint Very Light Light

CLARITY

FL IF VS 1-2 VS 2-2 SI 1-2 I 1-3 Flawless Internally Flawless Very Very Slightly Included Very Slightly Included Slightly Included Included



ADDITIONAL GRADING INFORMATION

Polish EXCELLENT Symmetry EXCELLENT Fluorescence NONE Inscription(s) LG781645947 Comments: This Laboratory Grown Diamond was created by Chemical Vapor Deposition (CVD) growth process. Type IIa



IGI



March 19, 2026 IGI Report No LG781645947 CUT CORNERED RECT. MODIFIED BRILLIANT 4.03 CARATS F VS 1 66.2% 68% Medium to Slightly Thick Pointed EXCELLENT EXCELLENT NONE LG781645947

Comments: This Laboratory Grown Diamond was created by Chemical Vapor Deposition (CVD) growth process. Type IIa