



ELECTRONIC COPY

LG781644287
Report verification at igi.org



March 14, 2026

IGI Report Number **LG781644287**

Description **LABORATORY GROWN DIAMOND**

Shape and Cutting Style **EMERALD CUT**

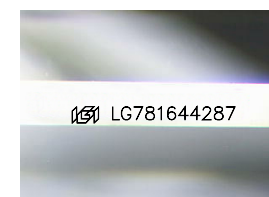
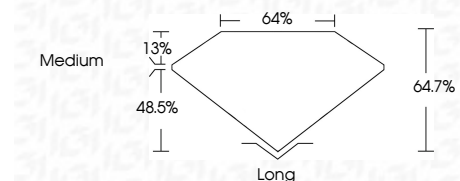
Measurements **9.20 X 6.65 X 4.30 MM**

GRADING RESULTS

Carat Weight **2.57 CARATS**

Color Grade **E**

Clarity Grade **VVS 2**



Sample Image Used

ADDITIONAL GRADING INFORMATION

Polish **EXCELLENT**

Symmetry **EXCELLENT**

Fluorescence **NONE**

Inscription(s) **IGI LG781644287**

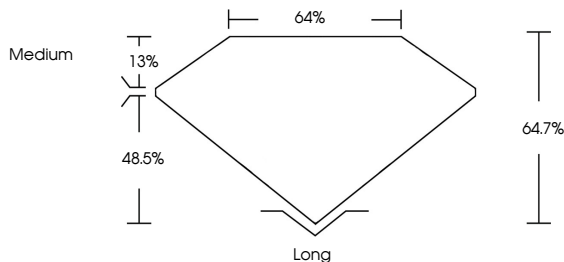
Comments: This Laboratory Grown Diamond was created by Chemical Vapor Deposition (CVD) growth process. Type IIa



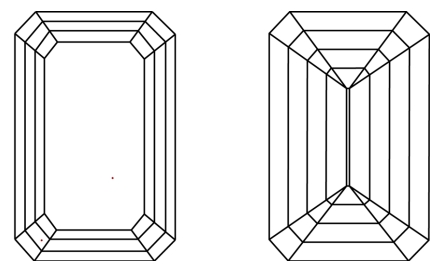
March 14, 2026	IGI Report No LG781644287
EMERALD CUT	2.57 CARATS
Carat Weight	E
Color Grade	VVS 2
Clarity Grade	64.7%
Depth	48%
Table	Medium
Grades	Long
Culet	EXCELLENT
Polish	EXCELLENT
Symmetry	NONE
Fluorescence	IGI LG781644287
Inscription(s)	

Comments: This Laboratory Grown Diamond was created by Chemical Vapor Deposition (CVD) growth process. Type IIa

PROPORTIONS



CLARITY CHARACTERISTICS



KEY TO SYMBOLS
Red symbols indicate internal characteristics.
Green symbols indicate external characteristics.

COLOR

D	E	F	G	H	I	J	Faint	Very Light	Light
---	---	---	---	---	---	---	-------	------------	-------

CLARITY

FL	IF	VVS ¹⁻²	VS ¹⁻²	SI ¹⁻²	I ¹⁻³
Flawless	Internally Flawless	Very Very Slightly Included	Very Slightly Included	Slightly Included	Included

