



March 10, 2026

**IGI Report Number** LG781643582  
**ROUND BRILLIANT**  
**LABORATORY GROWN DIAMOND**  
**5.05 - 5.08 X 3.05 MM**

**0.48 CARAT**  
**D**  
**VVS 1**  
**IDEAL**  
**EXCELLENT**  
**EXCELLENT**  
**NONE**  
**IGI LG781643582**

Comments: HEARTS & ARROWS As Grown - No indication of post-growth treatment. This Laboratory Grown Diamond was created by High Pressure High Temperature (HPHT) growth process. Type II

**LABORATORY GROWN DIAMOND REPORT**

March 10, 2026  
IGI Report Number **LG781643582**  
Description **LABORATORY GROWN DIAMOND**  
Shape and Cutting Style **ROUND BRILLIANT**  
Measurements **5.05 - 5.08 X 3.05 MM**

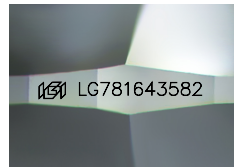
**GRADING RESULTS**

Carat Weight **0.48 CARAT**  
Color Grade **D**  
Clarity Grade **VVS 1**  
Cut Grade **IDEAL**

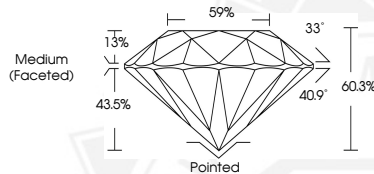
**ADDITIONAL GRADING INFORMATION**

Polish **EXCELLENT**  
Symmetry **EXCELLENT**  
Fluorescence **NONE**  
Inscription(s) **IGI LG781643582**

Comments: HEARTS & ARROWS As Grown - No indication of post-growth treatment. This Laboratory Grown Diamond was created by High Pressure High Temperature (HPHT) growth process. Type II



Sample Image Used



HEARTS & ARROWS



March 10, 2026

**IGI Report Number** LG781643582  
**ROUND BRILLIANT**  
**LABORATORY GROWN DIAMOND**  
**5.05 - 5.08 X 3.05 MM**

**0.48 CARAT**  
**D**  
**VVS 1**  
**IDEAL**  
**EXCELLENT**  
**EXCELLENT**  
**NONE**  
**IGI LG781643582**

Comments: HEARTS & ARROWS As Grown - No indication of post-growth treatment. This Laboratory Grown Diamond was created by High Pressure High Temperature (HPHT) growth process. Type II

THIS DOCUMENT WAS PRODUCED WITH THE FOLLOWING SECURITY MEASURES: SPECIAL DOCUMENT PAPER, INK SCREENS, WATERMARK, BACKGROUND DESIGNS, HOLOGRAM AND OTHER SECURITY FEATURES NOT LISTED AND DO EXCEED DOCUMENT SECURITY INDUSTRY GUIDELINES.