



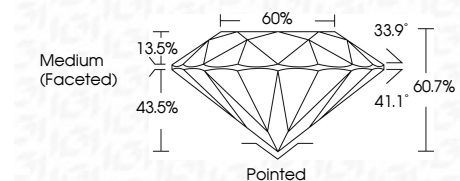
**ELECTRONIC COPY**

LG781637013  
Report verification at [igi.org](http://igi.org)



April 6, 2026  
IGI Report Number **LG781637013**  
Description **LABORATORY GROWN DIAMOND**  
Shape and Cutting Style **ROUND BRILLIANT**  
Measurements **8.83 - 8.86 X 5.37 MM**

**GRADING RESULTS**  
Carat Weight **2.58 CARATS**  
Color Grade **E**  
Clarity Grade **VVS 1**  
Cut Grade **IDEAL**



**ADDITIONAL GRADING INFORMATION**  
Polish **EXCELLENT**  
Symmetry **EXCELLENT**  
Fluorescence **NONE**  
Inscription(s) **IGI LG781637013**  
Comments: This Laboratory Grown Diamond was created by Chemical Vapor Deposition (CVD) growth process. Type IIa



April 6, 2026  
IGI Report No **LG781637013**  
**ROUND BRILLIANT**  
8.83 - 8.86 X 5.37 MM  
2.58 CARATS  
E  
VVS 1  
IDEAL  
60.7%  
60%  
Medium (Faceted)  
Pointed  
EXCELLENT  
EXCELLENT  
NONE  
IGI LG781637013  
Comments: This Laboratory Grown Diamond was created by Chemical Vapor Deposition (CVD) growth process. Type IIa

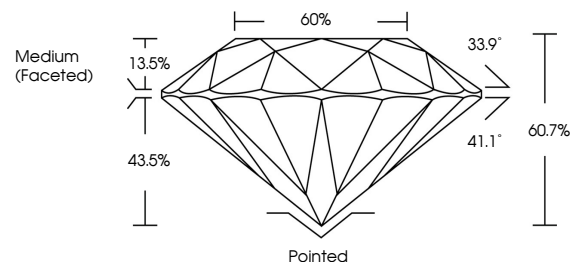
April 6, 2026  
IGI Report Number **LG781637013**  
Description **LABORATORY GROWN DIAMOND**  
Shape and Cutting Style **ROUND BRILLIANT**  
Measurements **8.83 - 8.86 X 5.37 MM**

**GRADING RESULTS**  
Carat Weight **2.58 CARATS**  
Color Grade **E**  
Clarity Grade **VVS 1**  
Cut Grade **IDEAL**

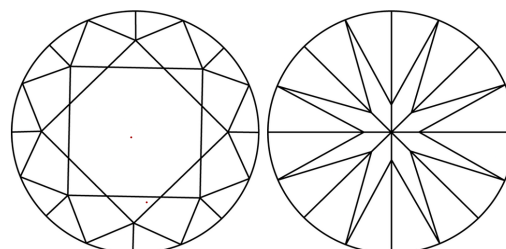
**ADDITIONAL GRADING INFORMATION**  
Polish **EXCELLENT**  
Symmetry **EXCELLENT**  
Fluorescence **NONE**  
Inscription(s) **IGI LG781637013**

Comments: This Laboratory Grown Diamond was created by Chemical Vapor Deposition (CVD) growth process. Type IIa

**PROPORTIONS**

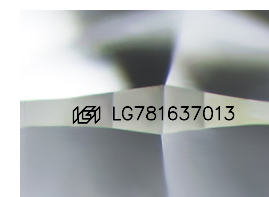


**CLARITY CHARACTERISTICS**



**KEY TO SYMBOLS**

Red symbols indicate internal characteristics.  
Green symbols indicate external characteristics.



Sample Image Used

**COLOR**

D E F G H I J Faint Very Light Light

**CLARITY**

FL	IF	VVS <sup>1-2</sup>	VS <sup>1-2</sup>	SI <sup>1-2</sup>	I <sup>1-3</sup>
Flawless	Internally Flawless	Very Very Slightly Included	Very Slightly Included	Slightly Included	Included

