



**ELECTRONIC COPY**

LG781636724  
Report verification at igi.org



April 2, 2026  
IGI Report Number **LG781636724**  
Description **LABORATORY GROWN DIAMOND**  
Shape and Cutting Style **CUSHION MODIFIED BRILLIANT**  
Measurements **11.21 X 8.08 X 4.87 MM**  
**GRADING RESULTS**  
Carat Weight **4.01 CARATS**  
Color Grade **FANCY VIVID YELLOW**  
Clarity Grade **VVS 2**

April 2, 2026  
IGI Report Number **LG781636724**  
Description **LABORATORY GROWN DIAMOND**  
Shape and Cutting Style **CUSHION MODIFIED BRILLIANT**  
Measurements **11.21 X 8.08 X 4.87 MM**

**GRADING RESULTS**

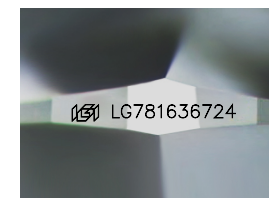
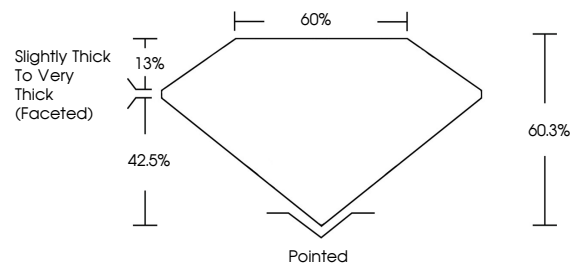
Carat Weight **4.01 CARATS**  
Color Grade **FANCY VIVID YELLOW**  
Clarity Grade **VVS 2**

**ADDITIONAL GRADING INFORMATION**

Polish **EXCELLENT**  
Symmetry **EXCELLENT**  
Fluorescence **NONE**  
Inscription(s) **LG781636724**

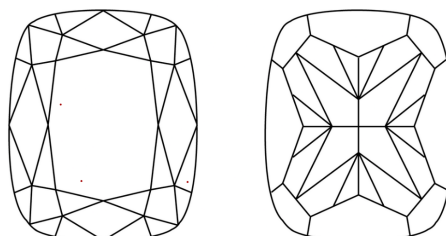
Comments: This Laboratory Grown Diamond was created by Chemical Vapor Deposition (CVD) growth process.

**PROPORTIONS**



Sample Image Used

**CLARITY CHARACTERISTICS**



**KEY TO SYMBOLS**

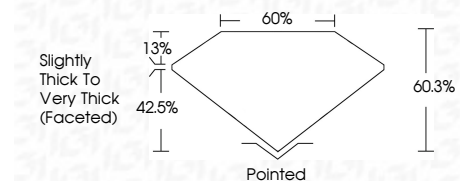
Red symbols indicate internal characteristics.  
Green symbols indicate external characteristics.

**COLOR**

D E F G H I J Faint Very Light Light

**CLARITY**

FL	IF	VVS <sup>1-2</sup>	VS <sup>1-2</sup>	SI <sup>1-2</sup>	I <sup>1-3</sup>
Flawless	Internally Flawless	Very Very Slightly Included	Very Slightly Included	Slightly Included	Included



**ADDITIONAL GRADING INFORMATION**

Polish **EXCELLENT**  
Symmetry **EXCELLENT**  
Fluorescence **NONE**  
Inscription(s) **LG781636724**  
Comments: This Laboratory Grown Diamond was created by Chemical Vapor Deposition (CVD) growth process.



**IGI**



April 2, 2026  
IGI Report No **LG781636724**  
**CUSHION MODIFIED BRILLIANT**  
**4.01 CARATS**  
Carat Weight **FANCY VIVID YELLOW**  
Color Grade **VVS 2**  
Clarity Grade **60.3%**  
Depth **60%**  
Table **Slightly Thick To Very Thick (Faceted)**  
Girdle **Pointed**  
Culet **EXCELLENT**  
Polish **EXCELLENT**  
Symmetry **NONE**  
Fluorescence **NONE**  
Inscription(s) **LG781636724**  
Comments: This Laboratory Grown Diamond was created by Chemical Vapor Deposition (CVD) growth process.