



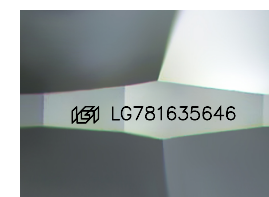
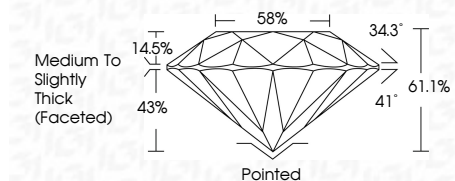
ELECTRONIC COPY

LG781635646 Report verification at igi.org



April 1, 2026 IGI Report Number LG781635646 Description LABORATORY GROWN DIAMOND Shape and Cutting Style ROUND BRILLIANT Measurements 9.34 - 9.39 X 5.73 MM

GRADING RESULTS Carat Weight 3.09 CARATS Color Grade E Clarity Grade VVS 2 Cut Grade IDEAL



Sample Image Used

ADDITIONAL GRADING INFORMATION Polish EXCELLENT Symmetry EXCELLENT Fluorescence NONE Inscription(s) LG781635646 Comments: This Laboratory Grown Diamond was created by Chemical Vapor Deposition (CVD) growth process. Type IIa



April 1, 2026 IGI Report No LG781635646 ROUND BRILLIANT 9.34 - 9.39 X 5.73 MM 3.09 CARATS E VVS 2 IDEAL 61.1% 58% Medium To Slightly Thick (Faceted) Pointed EXCELLENT EXCELLENT NONE NONE LG781635646

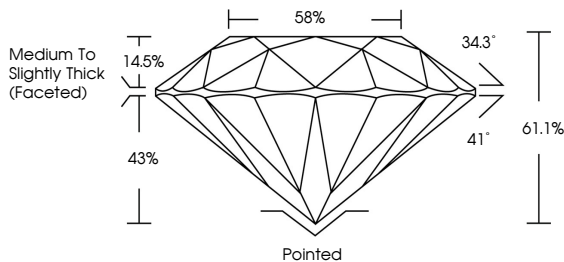
April 1, 2026 IGI Report Number LG781635646 Description LABORATORY GROWN DIAMOND Shape and Cutting Style ROUND BRILLIANT Measurements 9.34 - 9.39 X 5.73 MM

GRADING RESULTS Carat Weight 3.09 CARATS Color Grade E Clarity Grade VVS 2 Cut Grade IDEAL

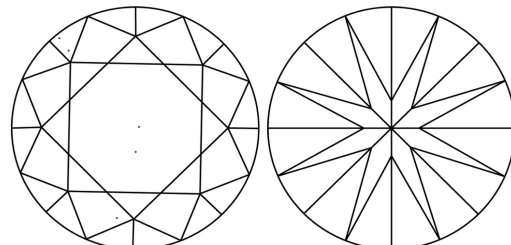
ADDITIONAL GRADING INFORMATION Polish EXCELLENT Symmetry EXCELLENT Fluorescence NONE Inscription(s) LG781635646

Comments: This Laboratory Grown Diamond was created by Chemical Vapor Deposition (CVD) growth process. Type IIa

PROPORTIONS



CLARITY CHARACTERISTICS



KEY TO SYMBOLS Red symbols indicate internal characteristics. Green symbols indicate external characteristics.

Color scale table with categories D, E, F, G, H, I, J, Faint, Very Light, Light

Clarity scale table with categories FL, IF, VS 1-2, VS 1-2, SI 1-2, I 1-3



Vertical text and QR code on the right side of the page