



ELECTRONIC COPY

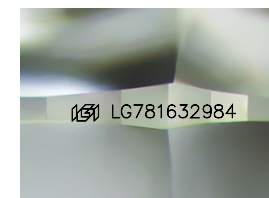
LG781632984
Report verification at igi.org



March 30, 2026
IGI Report Number **LG781632984**
Description **LABORATORY GROWN DIAMOND**
Shape and Cutting Style **ROUND BRILLIANT**
Measurements **6.53 - 6.57 X 3.97 MM**

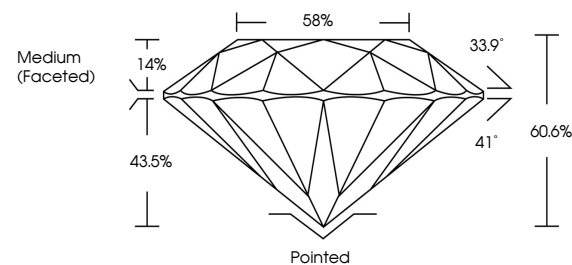
GRADING RESULTS

Carat Weight **1.03 CARAT**
Color Grade **F**
Clarity Grade **VS 1**
Cut Grade **IDEAL**

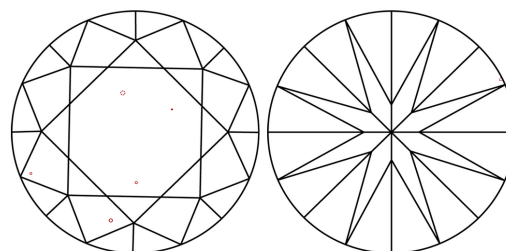


Sample Image Used

PROPORTIONS



CLARITY CHARACTERISTICS



KEY TO SYMBOLS

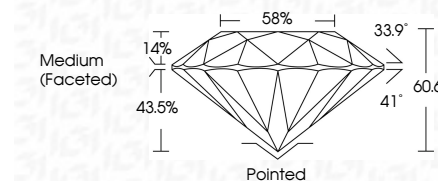
Red symbols indicate internal characteristics.
Green symbols indicate external characteristics.

COLOR

D E F G H I J Faint Very Light Light

CLARITY

FL	IF	VS ¹⁻²	VS ¹⁻²	SI ¹⁻²	I ¹⁻³
Flawless	Internally Flawless	Very Very Slightly Included	Very Slightly Included	Slightly Included	Included



ADDITIONAL GRADING INFORMATION

Polish **EXCELLENT**
Symmetry **EXCELLENT**
Fluorescence **NONE**
Inscription(s) **IGI LG781632984**
Comments: This Laboratory Grown Diamond was created by Chemical Vapor Deposition (CVD) growth process. Type IIa



IGI



March 30, 2026
IGI Report No LG781632984
ROUND BRILLIANT
6.53 - 6.57 X 3.97 MM
1.03 CARAT
Color Grade **F**
Clarity Grade **VS 1**
Depth **IDEAL**
Table **60.6%**
Girdle **58%**
Medium (Faceted)
Culet **Pointed**
Polish **EXCELLENT**
Symmetry **EXCELLENT**
Fluorescence **NONE**
Inscription(s) **IGI LG781632984**
Comments: This Laboratory Grown Diamond was created by Chemical Vapor Deposition (CVD) growth process. Type IIa