



**ELECTRONIC COPY**

LG781632278  
Report verification at igi.org



March 28, 2026

IGI Report Number **LG781632278**

Description **LABORATORY GROWN DIAMOND**

Shape and Cutting Style **ROUND BRILLIANT**

Measurements **9.28 - 9.35 X 5.71 MM**

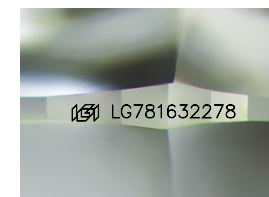
**GRADING RESULTS**

Carat Weight **3.09 CARATS**

Color Grade **E**

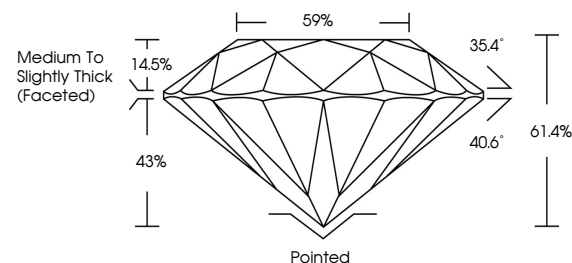
Clarity Grade **VS 1**

Cut Grade **IDEAL**

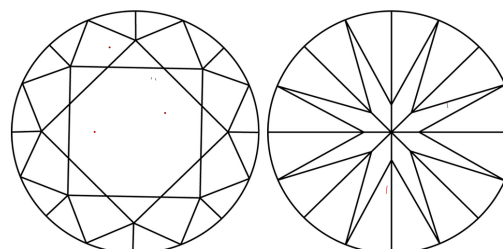


Sample Image Used

**PROPORTIONS**



**CLARITY CHARACTERISTICS**



**KEY TO SYMBOLS**

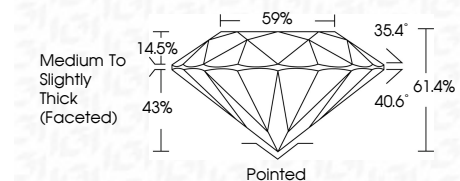
Red symbols indicate internal characteristics.  
Green symbols indicate external characteristics.

**COLOR**

D E F G H I J Faint Very Light Light

**CLARITY**

FL	IF	VS <sup>1-2</sup>	VS <sup>1-2</sup>	SI <sup>1-2</sup>	I <sup>1-3</sup>
Flawless	Internally Flawless	Very Very Slightly Included	Very Slightly Included	Slightly Included	Included



**ADDITIONAL GRADING INFORMATION**

Polish **EXCELLENT**

Symmetry **EXCELLENT**

Fluorescence **NONE**

Inscription(s) **IGI LG781632278**

Comments: This Laboratory Grown Diamond was created by Chemical Vapor Deposition (CVD) growth process. Type IIa



**IGI**



March 28, 2026  
IGI Report No LG781632278  
ROUND BRILLIANT

3.09 CARATS  
E

9.28 - 9.35 X 5.71 MM  
Color Grade  
Clarity Grade  
Cut Grade  
Depth  
Table  
Girdle  
Medium To Slightly Thick (Faceted)

VS 1  
IDEAL  
61.4%  
59%

Pointed  
EXCELLENT  
EXCELLENT  
NONE  
NONE

IGI LG781632278

Comments: This Laboratory Grown Diamond was created by Chemical Vapor Deposition (CVD) growth process. Type IIa