



ELECTRONIC COPY

LG781631705
Report verification at igi.org



March 28, 2026
IGI Report Number **LG781631705**
Description **LABORATORY GROWN DIAMOND**
Shape and Cutting Style **EMERALD CUT**
Measurements **6.73 X 4.64 X 3.17 MM**
GRADING RESULTS
Carat Weight **1.02 CARAT**
Color Grade **FANCY VIVID BLUE**
Clarity Grade **VVS 2**

March 28, 2026
IGI Report Number **LG781631705**
Description **LABORATORY GROWN DIAMOND**
Shape and Cutting Style **EMERALD CUT**
Measurements **6.73 X 4.64 X 3.17 MM**

GRADING RESULTS

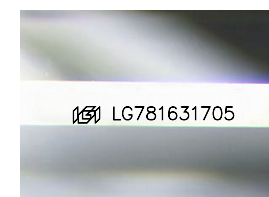
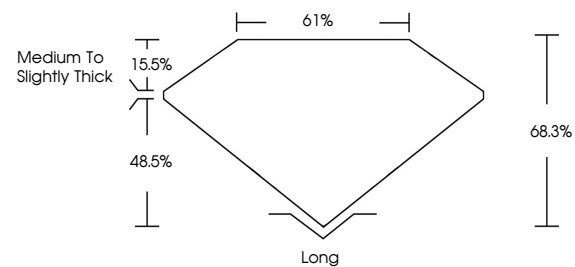
Carat Weight **1.02 CARAT**
Color Grade **FANCY VIVID BLUE**
Clarity Grade **VVS 2**

ADDITIONAL GRADING INFORMATION

Polish **EXCELLENT**
Symmetry **EXCELLENT**
Fluorescence **NONE**
Inscription(s) **IGI LG781631705**

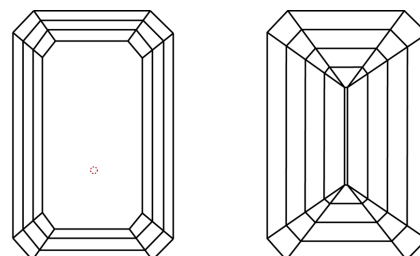
Comments: This Laboratory Grown Diamond was created by High Pressure High Temperature (HPHT) growth process.
Indications of post-growth treatment.

PROPORTIONS



Sample Image Used

CLARITY CHARACTERISTICS



KEY TO SYMBOLS

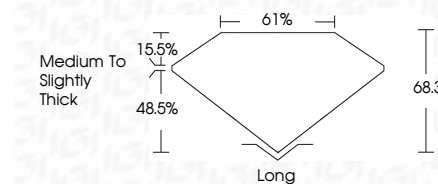
Red symbols indicate internal characteristics.
Green symbols indicate external characteristics.

COLOR

D E F G H I J Faint Very Light Light

CLARITY

FL	IF	VVS ¹⁻²	VS ¹⁻²	SI ¹⁻²	I ¹⁻³
Flawless	Internally Flawless	Very Very Slightly Included	Very Slightly Included	Slightly Included	Included



ADDITIONAL GRADING INFORMATION

Polish **EXCELLENT**
Symmetry **EXCELLENT**
Fluorescence **NONE**
Inscription(s) **IGI LG781631705**
Comments: This Laboratory Grown Diamond was created by High Pressure High Temperature (HPHT) growth process.
Indications of post-growth treatment.



IGI



March 28, 2026
IGI Report No **LG781631705**
EMERALD CUT
1.02 CARAT
Carat Weight
Color Grade **FANCY VIVID BLUE**
Clarity Grade **VVS 2**
Depth **68.3%**
Table **61%**
Girdle **Medium to Slightly Thick**
Culet **Long**
Polish **EXCELLENT**
Symmetry **EXCELLENT**
Fluorescence **NONE**
Inscription(s) **IGI LG781631705**

Comments: This Laboratory Grown Diamond was created by High Pressure High Temperature (HPHT) growth process.
Indications of post-growth treatment.