



ELECTRONIC COPY

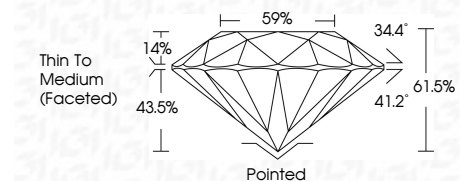
LG781631395 Report verification at igi.org



March 27, 2026 IGI Report Number LG781631395 Description LABORATORY GROWN DIAMOND Shape and Cutting Style ROUND BRILLIANT Measurements 6.50 - 6.54 X 4.01 MM

GRADING RESULTS

Carat Weight 1.05 CARAT Color Grade F Clarity Grade VVS 2 Cut Grade IDEAL



ADDITIONAL GRADING INFORMATION

Polish EXCELLENT Symmetry EXCELLENT Fluorescence NONE Inscription(s) IGI LG781631395 Comments: This Laboratory Grown Diamond was created by Chemical Vapor Deposition (CVD) growth process. Type IIa



March 27, 2026 IGI Report No LG781631395 ROUND BRILLIANT 1.05 CARAT F 6.50 - 6.54 X 4.01 MM Color Grade VVS 2 IDEAL 61.5% 59% Thin To Medium (Faceted) Cutler Pointed EXCELLENT Polish EXCELLENT Symmetry EXCELLENT Fluorescence NONE Inscriptions IGI LG781631395 Comments: This Laboratory Grown Diamond was created by Chemical Vapor Deposition (CVD) growth process. Type IIa

March 27, 2026 IGI Report Number LG781631395 Description LABORATORY GROWN DIAMOND Shape and Cutting Style ROUND BRILLIANT Measurements 6.50 - 6.54 X 4.01 MM

GRADING RESULTS

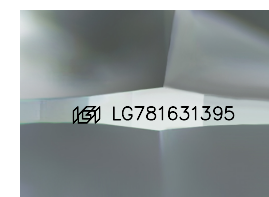
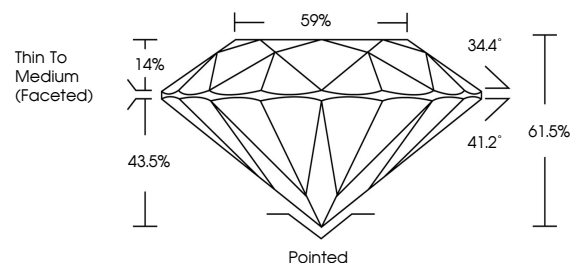
Carat Weight 1.05 CARAT Color Grade F Clarity Grade VVS 2 Cut Grade IDEAL

ADDITIONAL GRADING INFORMATION

Polish EXCELLENT Symmetry EXCELLENT Fluorescence NONE Inscription(s) IGI LG781631395

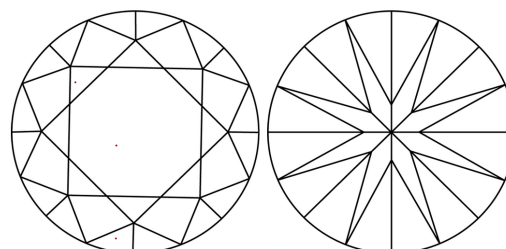
Comments: This Laboratory Grown Diamond was created by Chemical Vapor Deposition (CVD) growth process. Type IIa

PROPORTIONS



Sample Image Used

CLARITY CHARACTERISTICS



KEY TO SYMBOLS

Red symbols indicate internal characteristics. Green symbols indicate external characteristics.

COLOR

D E F G H I J Faint Very Light Light

CLARITY

FL IF VVS 1-2 VS 1-2 SI 1-2 I 1-3 Flawless Internally Flawless Very Very Slightly Included Very Slightly Included Slightly Included Included

