



**ELECTRONIC COPY**

LG781630716  
Report verification at igi.org



March 27, 2026

IGI Report Number **LG781630716**

Description **LABORATORY GROWN DIAMOND**

Shape and Cutting Style **PEAR BRILLIANT**

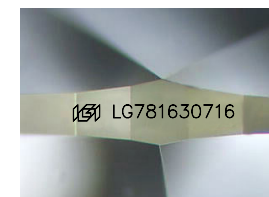
Measurements **9.95 X 6.53 X 4.04 MM**

**GRADING RESULTS**

Carat Weight **1.52 CARAT**

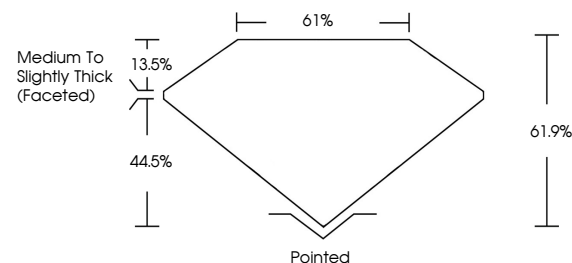
Color Grade **E**

Clarity Grade **VS 2**

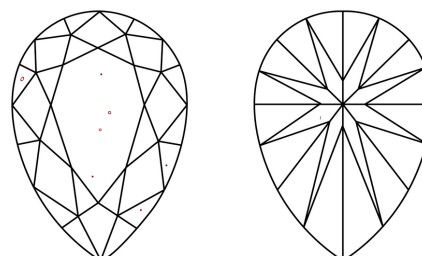


Sample Image Used

**PROPORTIONS**



**CLARITY CHARACTERISTICS**



**KEY TO SYMBOLS**

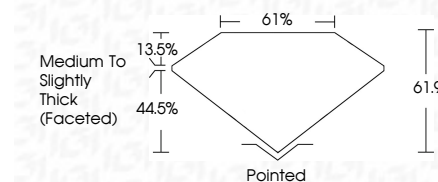
Red symbols indicate internal characteristics.  
Green symbols indicate external characteristics.

**COLOR**

D E F G H I J Faint Very Light Light

**CLARITY**

FL	IF	VS <sup>1-2</sup>	VS <sup>1-2</sup>	SI <sup>1-2</sup>	I <sup>1-3</sup>
Flawless	Internally Flawless	Very Very Slightly Included	Very Slightly Included	Slightly Included	Included



**ADDITIONAL GRADING INFORMATION**

Polish **EXCELLENT**

Symmetry **EXCELLENT**

Fluorescence **NONE**

Inscription(s) **IGI LG781630716**

Comments: This Laboratory Grown Diamond was created by Chemical Vapor Deposition (CVD) growth process. Type IIa



**IGI**



March 27, 2026	IGI Report No LG781630716	1.52 CARAT	E	VS 2	61%	61.9%	Pointed	EXCELLENT	EXCELLENT	NONE	IGI LG781630716
PEAR BRILLIANT	9.95 X 6.53 X 4.04 MM	Color Grade	Clarity Grade	Table	Girdle	Medium to Slightly Thick (Faceted)	Culet	Polish	Symmetry	Fluorescence	Inscription(s)

Comments: This Laboratory Grown Diamond was created by Chemical Vapor Deposition (CVD) growth process. Type IIa