



ELECTRONIC COPY

LG781630254
Report verification at igi.org



March 23, 2026
IGI Report Number **LG781630254**
Description **LABORATORY GROWN DIAMOND**
Shape and Cutting Style **ROUND BRILLIANT**
Measurements **9.32 - 9.36 X 5.51 MM**
GRADING RESULTS
Carat Weight **3.01 CARATS**
Color Grade **F**
Clarity Grade **VS 1**
Cut Grade **EXCELLENT**

March 23, 2026
IGI Report Number **LG781630254**
Description **LABORATORY GROWN DIAMOND**
Shape and Cutting Style **ROUND BRILLIANT**
Measurements **9.32 - 9.36 X 5.51 MM**

GRADING RESULTS

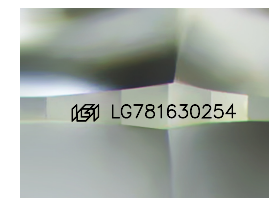
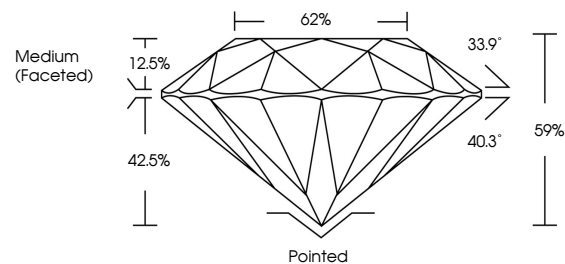
Carat Weight **3.01 CARATS**
Color Grade **F**
Clarity Grade **VS 1**
Cut Grade **EXCELLENT**

ADDITIONAL GRADING INFORMATION

Polish **EXCELLENT**
Symmetry **EXCELLENT**
Fluorescence **NONE**
Inscription(s) **IGI LG781630254**

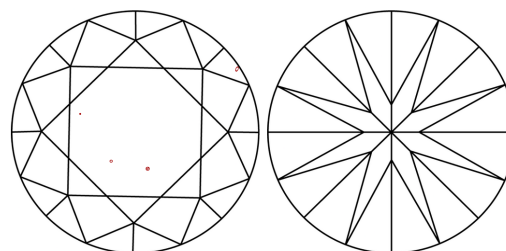
Comments: This Laboratory Grown Diamond was created by Chemical Vapor Deposition (CVD) growth process.
Type IIa

PROPORTIONS



Sample Image Used

CLARITY CHARACTERISTICS



KEY TO SYMBOLS

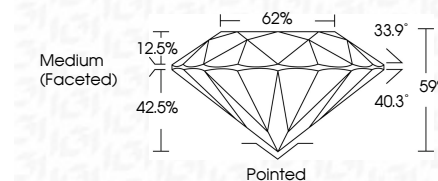
Red symbols indicate internal characteristics.
Green symbols indicate external characteristics.

COLOR

D E F G H I J Faint Very Light Light

CLARITY

FL	IF	VS ¹⁻²	VS ¹⁻²	SI ¹⁻²	I ¹⁻³
Flawless	Internally Flawless	Very Very Slightly Included	Very Slightly Included	Slightly Included	Included



ADDITIONAL GRADING INFORMATION

Polish **EXCELLENT**
Symmetry **EXCELLENT**
Fluorescence **NONE**
Inscription(s) **IGI LG781630254**
Comments: This Laboratory Grown Diamond was created by Chemical Vapor Deposition (CVD) growth process.
Type IIa



IGI



March 23, 2026
IGI Report No LG781630254
ROUND BRILLIANT
9.32 - 9.36 X 5.51 MM
3.01 CARATS
F
VS 1
EXCELLENT
59%
62%
Medium (Faceted)
Pointed
EXCELLENT
EXCELLENT
NONE
IGI LG781630254
Comments: This Laboratory Grown Diamond was created by Chemical Vapor Deposition (CVD) growth process.
Type IIa