



**ELECTRONIC COPY**

LG781630087  
Report verification at igi.org



March 20, 2026

IGI Report Number **LG781630087**

Description **LABORATORY GROWN DIAMOND**

Shape and Cutting Style **EMERALD CUT**

Measurements **12.72 X 9.00 X 6.16 MM**

**GRADING RESULTS**

Carat Weight **7.05 CARATS**

Color Grade **F**

Clarity Grade **VS 1**

March 20, 2026  
IGI Report Number **LG781630087**  
Description **LABORATORY GROWN DIAMOND**  
Shape and Cutting Style **EMERALD CUT**  
Measurements **12.72 X 9.00 X 6.16 MM**

**GRADING RESULTS**

Carat Weight **7.05 CARATS**

Color Grade **F**

Clarity Grade **VS 1**

**ADDITIONAL GRADING INFORMATION**

Polish **EXCELLENT**

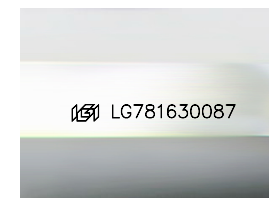
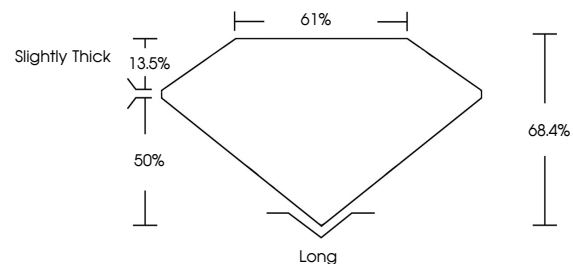
Symmetry **EXCELLENT**

Fluorescence **NONE**

Inscription(s) **IGI LG781630087**

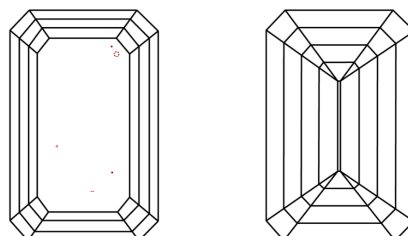
Comments: This Laboratory Grown Diamond was created by Chemical Vapor Deposition (CVD) growth process.  
Type IIa

**PROPORTIONS**



Sample Image Used

**CLARITY CHARACTERISTICS**



**KEY TO SYMBOLS**

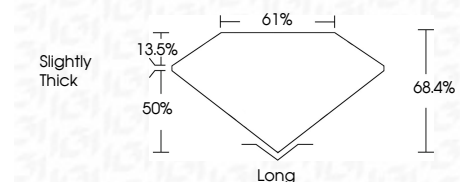
Red symbols indicate internal characteristics.  
Green symbols indicate external characteristics.

**COLOR**

D E F G H I J Faint Very Light Light

**CLARITY**

FL	IF	VS <sup>1-2</sup>	VS <sup>1-2</sup>	SI <sup>1-2</sup>	I <sup>1-3</sup>
Flawless	Internally Flawless	Very Very Slightly Included	Very Slightly Included	Slightly Included	Included



**ADDITIONAL GRADING INFORMATION**

Polish **EXCELLENT**

Symmetry **EXCELLENT**

Fluorescence **NONE**

Inscription(s) **IGI LG781630087**

Comments: This Laboratory Grown Diamond was created by Chemical Vapor Deposition (CVD) growth process.  
Type IIa



**IGI**



March 20, 2026  
IGI Report No LG781630087  
EMERALD CUT  
12.72 X 9.00 X 6.16 MM  
7.05 CARATS  
F  
Color Grade  
VS 1  
Clarity Grade  
68.4%  
Depth  
61%  
Table  
Slightly Thick  
Girdle  
Long  
EXCELLENT  
Polish  
EXCELLENT  
Symmetry  
NONE  
Fluorescence  
IGI LG781630087  
Inscription(s)

Comments: This Laboratory Grown Diamond was created by Chemical Vapor Deposition (CVD) growth process.  
Type IIa