



ELECTRONIC COPY

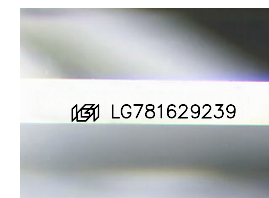
LG781629239
Report verification at igi.org



March 16, 2026
IGI Report Number **LG781629239**
Description **LABORATORY GROWN DIAMOND**

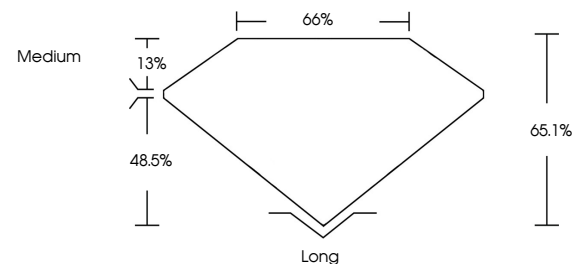
Shape and Cutting Style **EMERALD CUT**
Measurements **15.14 X 10.34 X 6.73 MM**

GRADING RESULTS
Carat Weight **10.59 CARATS**
Color Grade **F**
Clarity Grade **VVS 2**

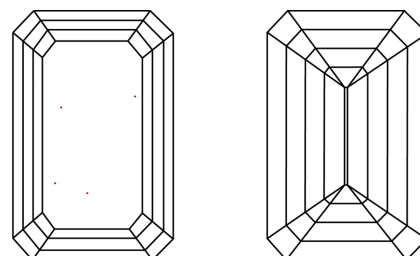


Sample Image Used

PROPORTIONS



CLARITY CHARACTERISTICS



KEY TO SYMBOLS

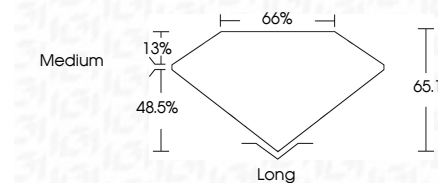
Red symbols indicate internal characteristics.
Green symbols indicate external characteristics.

COLOR

D E F G H I J Faint Very Light Light

CLARITY

FL	IF	VVS ¹⁻²	VS ¹⁻²	SI ¹⁻²	I ¹⁻³
Flawless	Internally Flawless	Very Very Slightly Included	Very Slightly Included	Slightly Included	Included



ADDITIONAL GRADING INFORMATION

Polish **EXCELLENT**
Symmetry **EXCELLENT**
Fluorescence **NONE**
Inscription(s) **IGI LG781629239**
Comments: This Laboratory Grown Diamond was created by Chemical Vapor Deposition (CVD) growth process. Type IIa



IGI



March 16, 2026
IGI Report No **LG781629239**
EMERALD CUT
15.14 X 10.34 X 6.73 MM
10.59 CARATS
Color Grade **F**
Clarity Grade **VVS 2**
Depth **65.1%**
Table **66%**
Girdle **Medium**
Culet **Long**
Polish **EXCELLENT**
Symmetry **EXCELLENT**
Fluorescence **NONE**
Inscription(s) **IGI LG781629239**
Comments: This Laboratory Grown Diamond was created by Chemical Vapor Deposition (CVD) growth process. Type IIa