



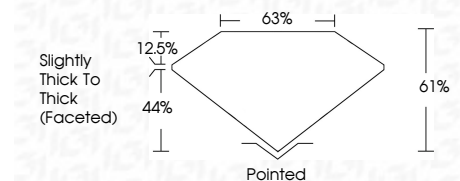
ELECTRONIC COPY

LG781628464 Report verification at igi.org



March 18, 2026 IGI Report Number LG781628464 Description LABORATORY GROWN DIAMOND Shape and Cutting Style OVAL BRILLIANT Measurements 13.24 X 8.79 X 5.36 MM

GRADING RESULTS Carat Weight 4.00 CARATS Color Grade E Clarity Grade VS 1



ADDITIONAL GRADING INFORMATION Polish EXCELLENT Symmetry EXCELLENT Fluorescence NONE Inscription(s) IGI LG781628464 Comments: This Laboratory Grown Diamond was created by Chemical Vapor Deposition (CVD) growth process. Type IIa



March 18, 2026 IGI Report No LG781628464 OVAL BRILLIANT 4.00 CARATS E 61% 63% Slightly Thick To Thick (Faceted) Pointed EXCELLENT EXCELLENT NONE NONE IGI LG781628464 Comments: This Laboratory Grown Diamond was created by Chemical Vapor Deposition (CVD) growth process. Type IIa

LABORATORY GROWN DIAMOND REPORT

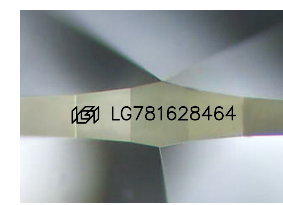
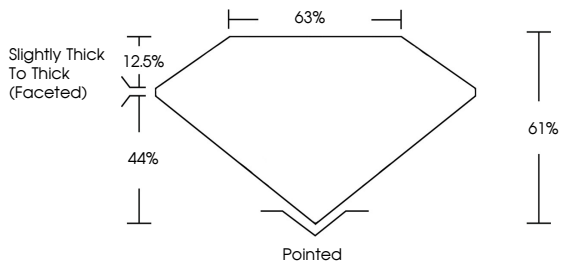
March 18, 2026 IGI Report Number LG781628464 Description LABORATORY GROWN DIAMOND Shape and Cutting Style OVAL BRILLIANT Measurements 13.24 X 8.79 X 5.36 MM

GRADING RESULTS Carat Weight 4.00 CARATS Color Grade E Clarity Grade VS 1

ADDITIONAL GRADING INFORMATION Polish EXCELLENT Symmetry EXCELLENT Fluorescence NONE Inscription(s) IGI LG781628464

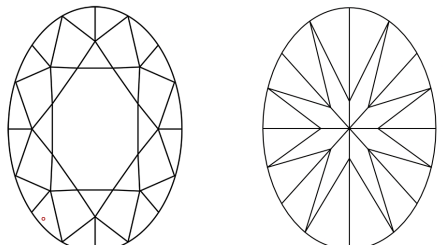
Comments: This Laboratory Grown Diamond was created by Chemical Vapor Deposition (CVD) growth process. Type IIa

PROPORTIONS



Sample Image Used

CLARITY CHARACTERISTICS



KEY TO SYMBOLS Red symbols indicate internal characteristics. Green symbols indicate external characteristics.

Table with columns D, E, F, G, H, I, J, Faint, Very Light, Light

Table with columns FL, IF, VS 1-2, VS 1-2, SI 1-2, I 1-3

