



ELECTRONIC COPY

LG781628337
Report verification at igi.org



March 13, 2026

IGI Report Number **LG781628337**

Description **LABORATORY GROWN DIAMOND**

Shape and Cutting Style **CUT CORNERED
RECTANGULAR MODIFIED
BRILLIANT**

Measurements **14.93 X 10.55 X 6.99 MM**

GRADING RESULTS

Carat Weight **10.03 CARATS**

Color Grade **FANCY VIVID YELLOW**

Clarity Grade **VS 2**

LABORATORY GROWN DIAMOND REPORT

March 13, 2026

IGI Report Number **LG781628337**

Description **LABORATORY GROWN DIAMOND**

Shape and Cutting Style **CUT CORNERED RECTANGULAR
MODIFIED BRILLIANT**

Measurements **14.93 X 10.55 X 6.99 MM**

GRADING RESULTS

Carat Weight **10.03 CARATS**

Color Grade **FANCY VIVID YELLOW**

Clarity Grade **VS 2**

ADDITIONAL GRADING INFORMATION

Polish **EXCELLENT**

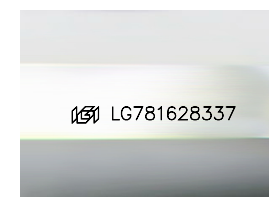
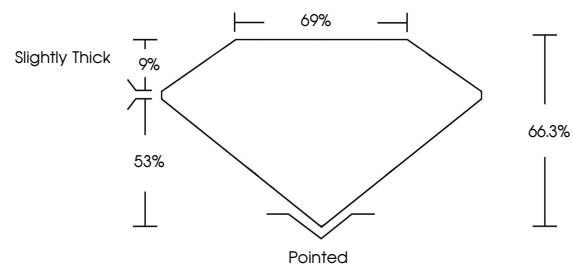
Symmetry **EXCELLENT**

Fluorescence **NONE**

Inscription(s) **IGI LG781628337**

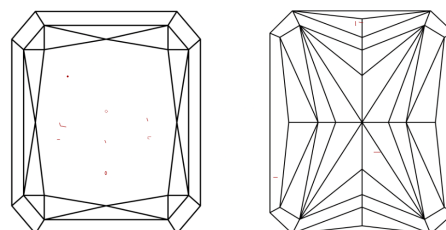
Comments: This Laboratory Grown Diamond was created by Chemical Vapor Deposition (CVD) growth process.

PROPORTIONS



Sample Image Used

CLARITY CHARACTERISTICS



KEY TO SYMBOLS

Red symbols indicate internal characteristics.
Green symbols indicate external characteristics.

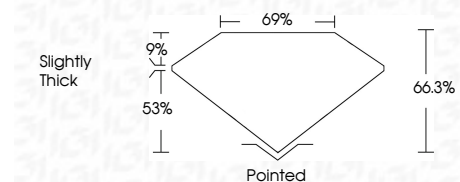
COLOR

D E F G H I J Faint Very Light Light

CLARITY

FL IF VS¹⁻² VS¹⁻² SI¹⁻² I¹⁻³

Flawless Internally Flawless Very Very Slightly Included Very Slightly Included Slightly Included Included



ADDITIONAL GRADING INFORMATION

Polish **EXCELLENT**

Symmetry **EXCELLENT**

Fluorescence **NONE**

Inscription(s) **IGI LG781628337**

Comments: This Laboratory Grown Diamond was created by Chemical Vapor Deposition (CVD) growth process.



March 13, 2026
IGI Report No LG781628337
CUT CORNERED RECT. MODIFIED BRILLIANT

10.03 CARATS
Carat Weight
Color Grade FANCY VIVID YELLOW
Clarity Grade VS 2
Depth 66.3%
Table 69%
Girdle Slightly Thick

Pointed
Culet
Polish EXCELLENT
Symmetry EXCELLENT
Fluorescence NONE
Inscription(s) IGI LG781628337

Comments: This Laboratory Grown Diamond was created by Chemical Vapor Deposition (CVD) growth process.