



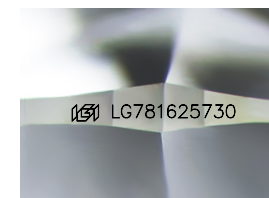
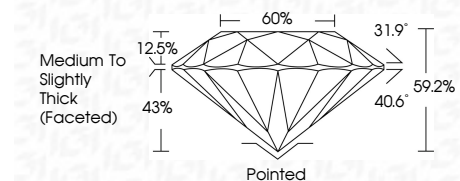
**ELECTRONIC COPY**

LG781625730  
Report verification at igi.org



March 12, 2026  
IGI Report Number **LG781625730**  
Description **LABORATORY GROWN DIAMOND**  
Shape and Cutting Style **ROUND BRILLIANT**  
Measurements **8.41 - 8.43 X 4.99 MM**

**GRADING RESULTS**  
Carat Weight **2.16 CARATS**  
Color Grade **E**  
Clarity Grade **VS 2**  
Cut Grade **EXCELLENT**



Sample Image Used

**ADDITIONAL GRADING INFORMATION**  
Polish **EXCELLENT**  
Symmetry **EXCELLENT**  
Fluorescence **NONE**  
Inscription(s) **IGI LG781625730**  
Comments: This Laboratory Grown Diamond was created by Chemical Vapor Deposition (CVD) growth process. Type IIa



March 12, 2026  
IGI Report No LG781625730  
**ROUND BRILLIANT**  
8.41 - 8.43 X 4.99 MM  
2.16 CARATS  
E  
VS 2  
EXCELLENT  
60%  
Medium To Slightly Thick (Faceted)  
Pointed  
EXCELLENT  
EXCELLENT  
NONE  
IGI LG781625730  
Comments: This Laboratory Grown Diamond was created by Chemical Vapor Deposition (CVD) growth process. Type IIa

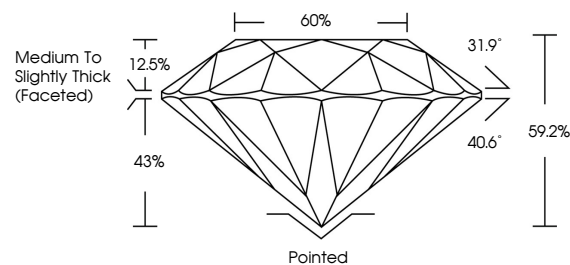
March 12, 2026  
IGI Report Number **LG781625730**  
Description **LABORATORY GROWN DIAMOND**  
Shape and Cutting Style **ROUND BRILLIANT**  
Measurements **8.41 - 8.43 X 4.99 MM**

**GRADING RESULTS**  
Carat Weight **2.16 CARATS**  
Color Grade **E**  
Clarity Grade **VS 2**  
Cut Grade **EXCELLENT**

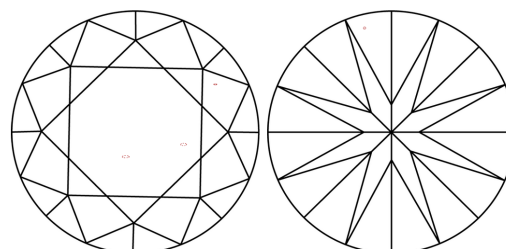
**ADDITIONAL GRADING INFORMATION**  
Polish **EXCELLENT**  
Symmetry **EXCELLENT**  
Fluorescence **NONE**  
Inscription(s) **IGI LG781625730**

Comments: This Laboratory Grown Diamond was created by Chemical Vapor Deposition (CVD) growth process. Type IIa

**PROPORTIONS**



**CLARITY CHARACTERISTICS**



**KEY TO SYMBOLS**

Red symbols indicate internal characteristics.  
Green symbols indicate external characteristics.

**COLOR**

D E F G H I J Faint Very Light Light

**CLARITY**

FL	IF	VS <sup>1-2</sup>	VS <sup>1-2</sup>	SI <sup>1-2</sup>	I <sup>1-3</sup>
Flawless	Internally Flawless	Very Very Slightly Included	Very Slightly Included	Slightly Included	Included

