



ELECTRONIC COPY

LG781625202
Report verification at igi.org



March 17, 2026

IGI Report Number **LG781625202**

Description **LABORATORY GROWN DIAMOND**

Shape and Cutting Style **PRINCESS CUT**

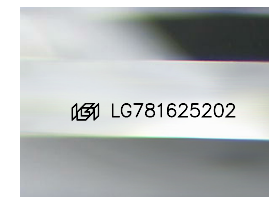
Measurements **6.64 X 6.57 X 4.82 MM**

GRADING RESULTS

Carat Weight **1.84 CARAT**

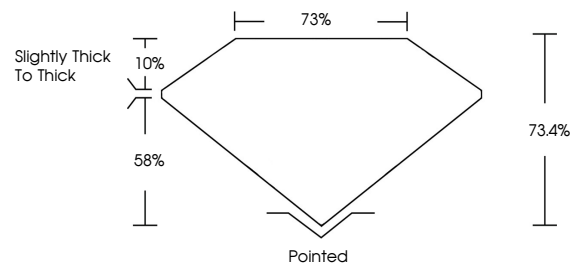
Color Grade **E**

Clarity Grade **VVS 2**

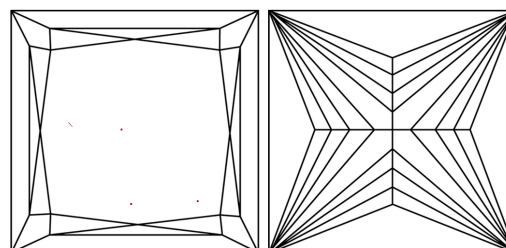


Sample Image Used

PROPORTIONS



CLARITY CHARACTERISTICS



KEY TO SYMBOLS

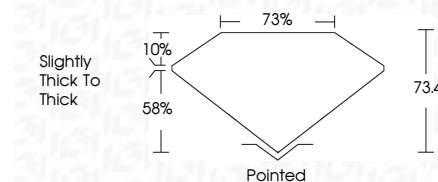
Red symbols indicate internal characteristics.
Green symbols indicate external characteristics.

COLOR

D E F G H I J Faint Very Light Light

CLARITY

FL	IF	VVS ¹⁻²	VS ¹⁻²	SI ¹⁻²	I ¹⁻³
Flawless	Internally Flawless	Very Very Slightly Included	Very Slightly Included	Slightly Included	Included



ADDITIONAL GRADING INFORMATION

Polish **EXCELLENT**

Symmetry **EXCELLENT**

Fluorescence **NONE**

Inscription(s) **IGI LG781625202**

Comments: This Laboratory Grown Diamond was created by Chemical Vapor Deposition (CVD) growth process. Type IIa



IGI



March 17, 2026	1.84 CARAT	E	VVS 2	73.4%	75%	Slightly Thick To Thick	Pointed
IGI Report No LG781625202	6.64 X 6.57 X 4.82 MM	PRINCESS CUT	Color Grade	Depth	Table	Girdle	Culet
			Polish	Symmetry	Fluorescence	Inscription(s)	
			EXCELLENT	EXCELLENT	NONE	IGI LG781625202	

Comments: This Laboratory Grown Diamond was created by Chemical Vapor Deposition (CVD) growth process. Type IIa