



ELECTRONIC COPY

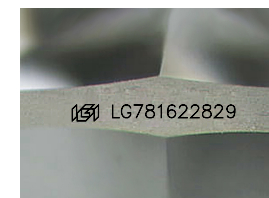
LG781622829
Report verification at igi.org



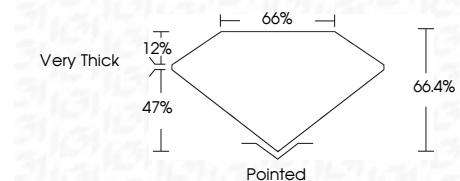
March 13, 2026
IGI Report Number **LG781622829**
Description **LABORATORY GROWN DIAMOND**
Shape and Cutting Style **KITE STEP CUT**
Measurements **9.89 X 6.72 X 4.46 MM**

GRADING RESULTS

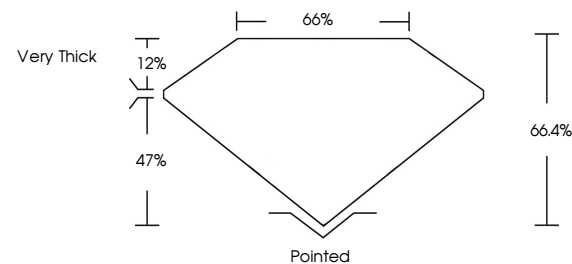
Carat Weight **1.37 CARAT**
Color Grade **E**
Clarity Grade **VS 1**



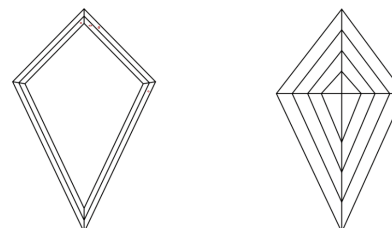
Sample Image Used



PROPORTIONS



CLARITY CHARACTERISTICS



KEY TO SYMBOLS

Red symbols indicate internal characteristics.
Green symbols indicate external characteristics.

COLOR

D E F G H I J Faint Very Light Light

CLARITY

FL	IF	VS ¹⁻²	VS ¹⁻²	SI ¹⁻²	I ¹⁻³
Flawless	Internally Flawless	Very Very Slightly Included	Very Slightly Included	Slightly Included	Included

ADDITIONAL GRADING INFORMATION

Polish **EXCELLENT**
Symmetry **EXCELLENT**
Fluorescence **NONE**
Inscription(s) **IGI LG781622829**
Comments: This Laboratory Grown Diamond was created by Chemical Vapor Deposition (CVD) growth process.
Type IIa



IGI



March 13, 2026
IGI Report No LG781622829
KITE STEP CUT
9.89 X 6.72 X 4.46 MM
1.37 CARAT
E
Color Grade
VS 1
Clarity Grade
66.4%
66%
Table
Girdle
Very Thick
Pointed
EXCELLENT
EXCELLENT
NONE
IGI LG781622829
Inscription(s)
Comments: This Laboratory Grown Diamond was created by Chemical Vapor Deposition (CVD) growth process.
Type IIa