



**ELECTRONIC COPY**

LG781617989  
Report verification at igi.org



March 30, 2026  
IGI Report Number **LG781617989**  
Description **LABORATORY GROWN DIAMOND**  
Shape and Cutting Style **HEXAGONAL STEP CUT**  
Measurements **6.98 X 6.02 X 4.06 MM**  
**GRADING RESULTS**  
Carat Weight **1.26 CARAT**  
Color Grade **D**  
Clarity Grade **INTERNALLY FLAWLESS**

March 30, 2026  
IGI Report Number **LG781617989**  
Description **LABORATORY GROWN DIAMOND**  
Shape and Cutting Style **HEXAGONAL STEP CUT**  
Measurements **6.98 X 6.02 X 4.06 MM**

**GRADING RESULTS**

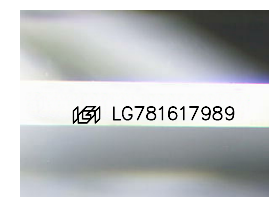
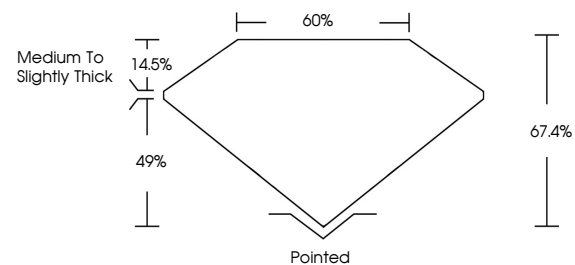
Carat Weight **1.26 CARAT**  
Color Grade **D**  
Clarity Grade **INTERNALLY FLAWLESS**

**ADDITIONAL GRADING INFORMATION**

Polish **EXCELLENT**  
Symmetry **EXCELLENT**  
Fluorescence **NONE**  
Inscription(s) **IGI LG781617989**

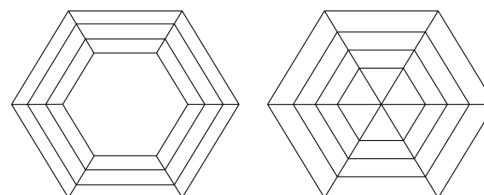
Comments: As Grown - No indication of post-growth treatment.  
This Laboratory Grown Diamond was created by High Pressure High Temperature (HPHT) growth process. Type II

**PROPORTIONS**



Sample Image Used

**CLARITY CHARACTERISTICS**



**KEY TO SYMBOLS**

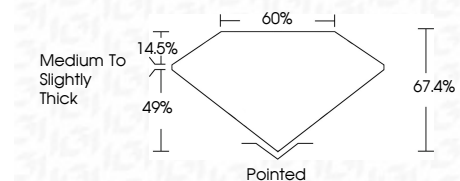
Red symbols indicate internal characteristics.  
Green symbols indicate external characteristics.

**COLOR**

D E F G H I J Faint Very Light Light

**CLARITY**

FL	IF	VS <sup>1-2</sup>	VS <sup>1-2</sup>	SI <sup>1-2</sup>	I <sup>1-3</sup>
Flawless	Internally Flawless	Very Very Slightly Included	Very Slightly Included	Slightly Included	Included



**ADDITIONAL GRADING INFORMATION**

Polish **EXCELLENT**  
Symmetry **EXCELLENT**  
Fluorescence **NONE**  
Inscription(s) **IGI LG781617989**  
Comments: As Grown - No indication of post-growth treatment.  
This Laboratory Grown Diamond was created by High Pressure High Temperature (HPHT) growth process. Type II



**IGI**



March 30, 2026  
IGI Report No. LG781617989  
**HEXAGONAL STEP CUT**  
6.98 X 6.02 X 4.06 MM  
1.26 CARAT  
D  
Color Grade  
Clarity Grade  
Table  
Girdle  
Medium to Slightly Thick  
Pointed  
EXCELLENT  
EXCELLENT  
NONE  
IGI LG781617989  
Comments: As Grown - No indication of post-growth treatment.  
This Laboratory Grown Diamond was created by High Pressure High Temperature (HPHT) growth process. Type II