



ELECTRONIC COPY

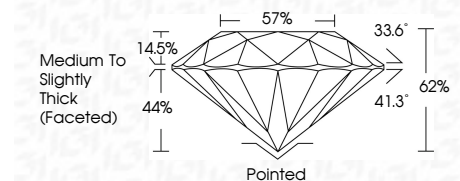
LG781609985 Report verification at igi.org



March 18, 2026 IGI Report Number LG781609985 Description LABORATORY GROWN DIAMOND Shape and Cutting Style ROUND BRILLIANT Measurements 6.98 - 7.02 X 4.34 MM

GRADING RESULTS

Carat Weight 1.30 CARAT Color Grade G Clarity Grade VS 2 Cut Grade IDEAL



ADDITIONAL GRADING INFORMATION

Polish EXCELLENT Symmetry EXCELLENT Fluorescence NONE Inscription(s) IGI LG781609985 Comments: This Laboratory Grown Diamond was created by Chemical Vapor Deposition (CVD) growth process. Type IIa



March 18, 2026 IGI Report No LG781609985 ROUND BRILLIANT 6.98 - 7.02 X 4.34 MM 1.30 CARAT G VS 2 IDEAL 62% 57% Medium To Slightly Thick (Faceted) Pointed EXCELLENT EXCELLENT NONE IGI LG781609985 Comments: This Laboratory Grown Diamond was created by Chemical Vapor Deposition (CVD) growth process. Type IIa

March 18, 2026 IGI Report Number LG781609985 Description LABORATORY GROWN DIAMOND Shape and Cutting Style ROUND BRILLIANT Measurements 6.98 - 7.02 X 4.34 MM

GRADING RESULTS

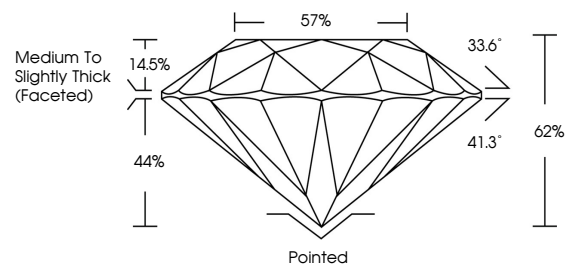
Carat Weight 1.30 CARAT Color Grade G Clarity Grade VS 2 Cut Grade IDEAL

ADDITIONAL GRADING INFORMATION

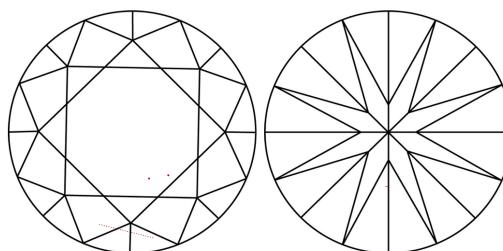
Polish EXCELLENT Symmetry EXCELLENT Fluorescence NONE Inscription(s) IGI LG781609985

Comments: This Laboratory Grown Diamond was created by Chemical Vapor Deposition (CVD) growth process. Type IIa

PROPORTIONS

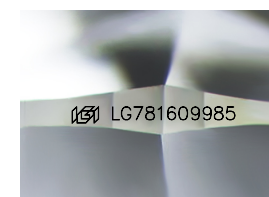


CLARITY CHARACTERISTICS



KEY TO SYMBOLS

Red symbols indicate internal characteristics. Green symbols indicate external characteristics.



Sample Image Used

COLOR

D E F G H I J Faint Very Light Light

CLARITY

FL IF VS 1-2 VS 1-2 SI 1-2 I 1-3 Flawless Internally Flawless Very Very Slightly Included Very Slightly Included Slightly Included Included

