



ELECTRONIC COPY

LG781609936
Report verification at igi.org



March 23, 2026
IGI Report Number **LG781609936**
Description **LABORATORY GROWN DIAMOND**
Shape and Cutting Style **ROUND BRILLIANT**
Measurements **7.49 - 7.51 X 4.46 MM**
GRADING RESULTS
Carat Weight **1.52 CARAT**
Color Grade **H**
Clarity Grade **VVS 2**
Cut Grade **EXCELLENT**

March 23, 2026
IGI Report Number **LG781609936**
Description **LABORATORY GROWN DIAMOND**
Shape and Cutting Style **ROUND BRILLIANT**
Measurements **7.49 - 7.51 X 4.46 MM**

GRADING RESULTS

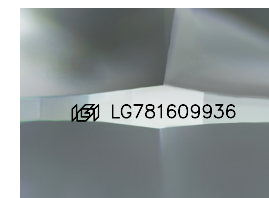
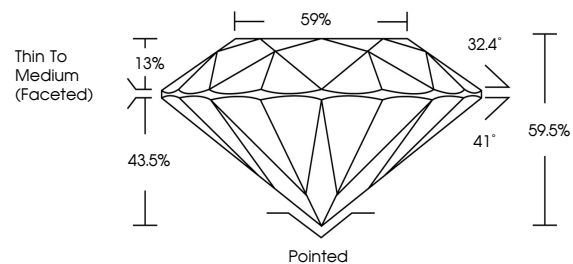
Carat Weight **1.52 CARAT**
Color Grade **H**
Clarity Grade **VVS 2**
Cut Grade **EXCELLENT**

ADDITIONAL GRADING INFORMATION

Polish **EXCELLENT**
Symmetry **EXCELLENT**
Fluorescence **NONE**
Inscription(s) **IGI LG781609936**

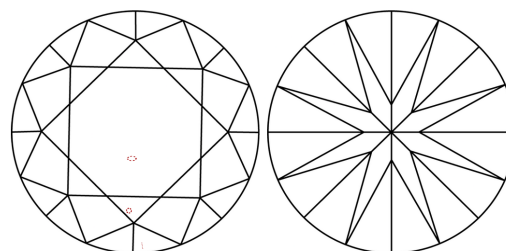
Comments: This Laboratory Grown Diamond was created by Chemical Vapor Deposition (CVD) growth process.
Type IIa

PROPORTIONS



Sample Image Used

CLARITY CHARACTERISTICS



KEY TO SYMBOLS

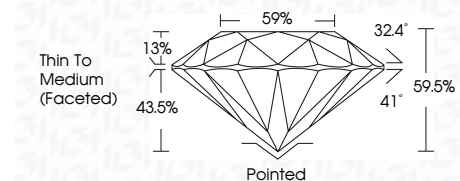
Red symbols indicate internal characteristics.
Green symbols indicate external characteristics.

COLOR

D E F G H I J Faint Very Light Light

CLARITY

FL	IF	VVS ¹⁻²	VS ¹⁻²	SI ¹⁻²	I ¹⁻³
Flawless	Internally Flawless	Very Very Slightly Included	Very Slightly Included	Slightly Included	Included



ADDITIONAL GRADING INFORMATION

Polish **EXCELLENT**
Symmetry **EXCELLENT**
Fluorescence **NONE**
Inscription(s) **IGI LG781609936**
Comments: This Laboratory Grown Diamond was created by Chemical Vapor Deposition (CVD) growth process.
Type IIa



March 23, 2026
IGI Report No LG781609936
ROUND BRILLIANT
7.49 - 7.51 X 4.46 MM
1.52 CARAT
H
Color Grade
VVS 2
EXCELLENT
Depth
59.5%
Table
59%
Girdle
Thin To Medium (Faceted)
Culet
Pointed
Polish
EXCELLENT
Symmetry
EXCELLENT
Fluorescence
NONE
Inscriptions(s)
IGI LG781609936
Comments: This Laboratory Grown Diamond was created by Chemical Vapor Deposition (CVD) growth process.
Type IIa