



**ELECTRONIC COPY**

LG781609786  
Report verification at igi.org



March 14, 2026

IGI Report Number **LG781609786**

Description **LABORATORY GROWN DIAMOND**

Shape and Cutting Style **ROUND BRILLIANT**

Measurements **6.54 - 6.57 X 4.08 MM**

**GRADING RESULTS**

Carat Weight **1.07 CARAT**

Color Grade **G**

Clarity Grade **VVS 2**

Cut Grade **IDEAL**

March 14, 2026  
IGI Report Number **LG781609786**  
Description **LABORATORY GROWN DIAMOND**  
Shape and Cutting Style **ROUND BRILLIANT**  
Measurements **6.54 - 6.57 X 4.08 MM**

**GRADING RESULTS**

Carat Weight **1.07 CARAT**

Color Grade **G**

Clarity Grade **VVS 2**

Cut Grade **IDEAL**

**ADDITIONAL GRADING INFORMATION**

Polish **EXCELLENT**

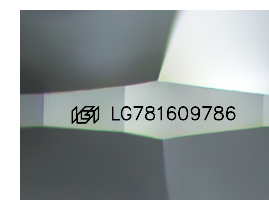
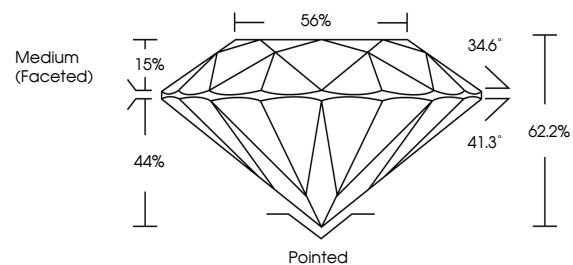
Symmetry **EXCELLENT**

Fluorescence **NONE**

Inscription(s) **IGI LG781609786**

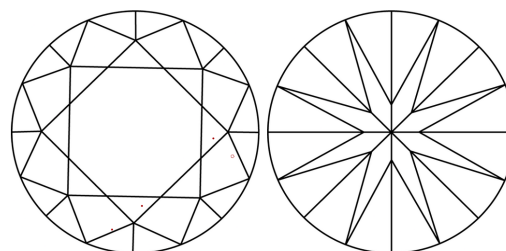
Comments: This Laboratory Grown Diamond was created by Chemical Vapor Deposition (CVD) growth process.  
Type IIa

**PROPORTIONS**



Sample Image Used

**CLARITY CHARACTERISTICS**



**KEY TO SYMBOLS**

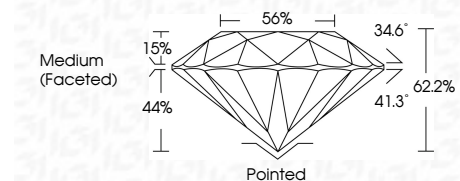
Red symbols indicate internal characteristics.  
Green symbols indicate external characteristics.

**COLOR**

D E F G H I J Faint Very Light Light

**CLARITY**

| FL       | IF                  | VVS <sup>1-2</sup>          | VS <sup>1-2</sup>      | SI <sup>1-2</sup> | I <sup>1-3</sup> |
|----------|---------------------|-----------------------------|------------------------|-------------------|------------------|
| Flawless | Internally Flawless | Very Very Slightly Included | Very Slightly Included | Slightly Included | Included         |



**ADDITIONAL GRADING INFORMATION**

Polish **EXCELLENT**

Symmetry **EXCELLENT**

Fluorescence **NONE**

Inscription(s) **IGI LG781609786**

Comments: This Laboratory Grown Diamond was created by Chemical Vapor Deposition (CVD) growth process.  
Type IIa



**IGI**



|                |                           |                 |                       |            |     |       |       |       |     |                  |         |           |           |      |                 |
|----------------|---------------------------|-----------------|-----------------------|------------|-----|-------|-------|-------|-----|------------------|---------|-----------|-----------|------|-----------------|
| March 14, 2026 | IGI Report No LG781609786 | ROUND BRILLIANT | 6.54 - 6.57 X 4.08 MM | 1.07 CARAT | G   | VVS 2 | IDEAL | 62.2% | 56% | Medium (Faceted) | Pointed | EXCELLENT | EXCELLENT | NONE | IGI LG781609786 |
| IGI            | IGI                       | IGI             | IGI                   | IGI        | IGI | IGI   | IGI   | IGI   | IGI | IGI              | IGI     | IGI       | IGI       | IGI  | IGI             |

Comments: This Laboratory Grown Diamond was created by Chemical Vapor Deposition (CVD) growth process.  
Type IIa