



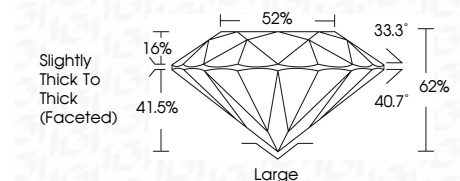
ELECTRONIC COPY

LG781609727
Report verification at igi.org



March 18, 2026
IGI Report Number LG781609727
Description LABORATORY GROWN DIAMOND
Shape and Cutting Style OLD EUROPEAN CUT
Measurements 7.76 - 7.82 X 4.83 MM

GRADING RESULTS
Carat Weight 1.90 CARAT
Color Grade G
Clarity Grade VVS 2



ADDITIONAL GRADING INFORMATION
Polish EXCELLENT
Symmetry VERY GOOD
Fluorescence NONE
Inscription(s) LG781609727
Comments: This Laboratory Grown Diamond was created by Chemical Vapor Deposition (CVD) growth process. Type IIa



March 18, 2026
IGI Report No LG781609727
OLD EUROPEAN CUT
7.76 - 7.82 X 4.83 MM
1.90 CARAT
Color Grade G
Clarity Grade VVS 2
Depth 62%
Table 62%
Girdle Slightly Thick To Thick (Faceted)
Culet Large
Polish EXCELLENT
Symmetry VERY GOOD
Fluorescence NONE
Inscription(s) LG781609727
Comments: This Laboratory Grown Diamond was created by Chemical Vapor Deposition (CVD) growth process. Type IIa

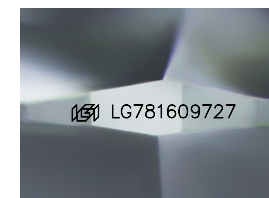
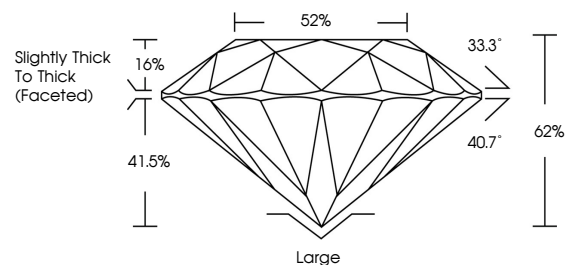
March 18, 2026
IGI Report Number LG781609727
Description LABORATORY GROWN DIAMOND
Shape and Cutting Style OLD EUROPEAN CUT
Measurements 7.76 - 7.82 X 4.83 MM

GRADING RESULTS
Carat Weight 1.90 CARAT
Color Grade G
Clarity Grade VVS 2

ADDITIONAL GRADING INFORMATION
Polish EXCELLENT
Symmetry VERY GOOD
Fluorescence NONE
Inscription(s) LG781609727

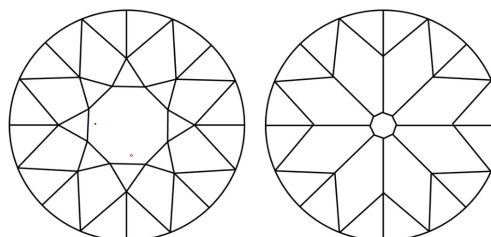
Comments: This Laboratory Grown Diamond was created by Chemical Vapor Deposition (CVD) growth process. Type IIa

PROPORTIONS



Sample Image Used

CLARITY CHARACTERISTICS



KEY TO SYMBOLS

Red symbols indicate internal characteristics.
Green symbols indicate external characteristics.

COLOR

D E F G H I J Faint Very Light Light

CLARITY

Table with columns: FL, IF, VS 1-2, VS 1-2, SI 1-2, I 1-3 and corresponding descriptions: Flawless, Internally Flawless, Very Very Slightly Included, Very Slightly Included, Slightly Included, Included

