



ELECTRONIC COPY

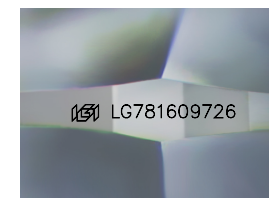
LG781609726
Report verification at igi.org



March 18, 2026
IGI Report Number **LG781609726**
Description **LABORATORY GROWN DIAMOND**
Shape and Cutting Style **OLD EUROPEAN CUT**
Measurements **7.84 - 7.90 X 4.84 MM**

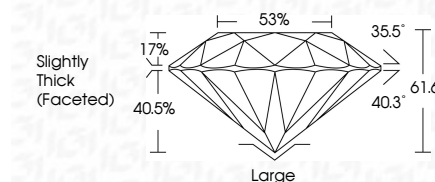
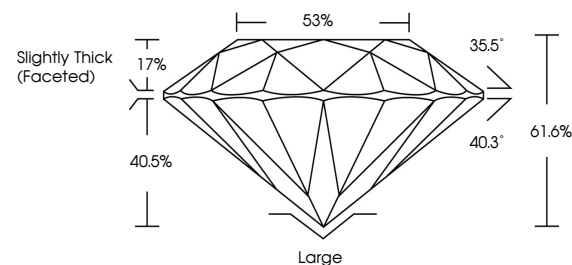
GRADING RESULTS

Carat Weight **1.94 CARAT**
Color Grade **G**
Clarity Grade **VS 1**

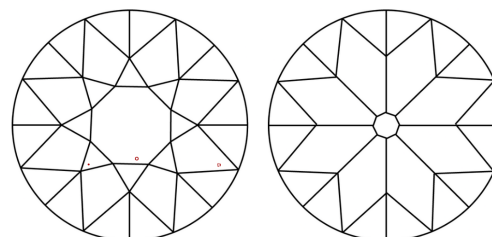


Sample Image Used

PROPORTIONS



CLARITY CHARACTERISTICS



KEY TO SYMBOLS

Red symbols indicate internal characteristics.
Green symbols indicate external characteristics.

COLOR

D E F G H I J Faint Very Light Light

CLARITY

FL	IF	VS ¹⁻²	VS ¹⁻²	SI ¹⁻²	I ¹⁻³
Flawless	Internally Flawless	Very Very Slightly Included	Very Slightly Included	Slightly Included	Included

ADDITIONAL GRADING INFORMATION

Polish **EXCELLENT**
Symmetry **EXCELLENT**
Fluorescence **NONE**
Inscription(s) **IGI LG781609726**
Comments: This Laboratory Grown Diamond was created by Chemical Vapor Deposition (CVD) growth process. Type IIa



IGI



March 18, 2026
IGI Report No LG781609726
OLD EUROPEAN CUT
7.84 - 7.90 X 4.84 MM
1.94 CARAT
Color Grade **G**
Clarity Grade **VS 1**
Depth **61.6%**
Table **85%**
Girdle **Slightly Thick (Faceted)**
Culet **Large**
Polish **EXCELLENT**
Symmetry **EXCELLENT**
Fluorescence **NONE**
Inscription(s) **IGI LG781609726**
Comments: This Laboratory Grown Diamond was created by Chemical Vapor Deposition (CVD) growth process. Type IIa