



ELECTRONIC COPY

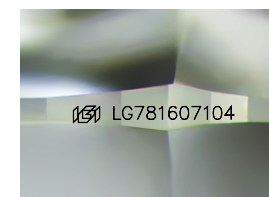
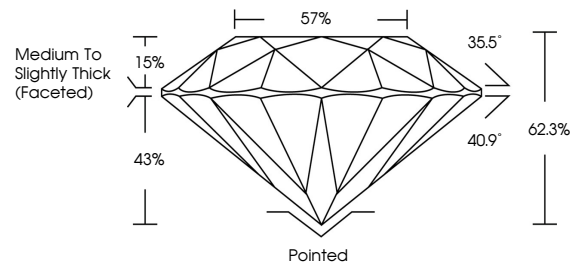
LG781607104
Report verification at igi.org



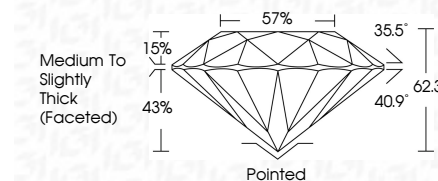
March 28, 2026
IGI Report Number LG781607104
Description LABORATORY GROWN DIAMOND
Shape and Cutting Style ROUND BRILLIANT
Measurements 7.29 - 7.32 X 4.55 MM
GRADING RESULTS
Carat Weight 1.51 CARAT
Color Grade D
Clarity Grade VVS 2
Cut Grade IDEAL

March 28, 2026
IGI Report Number LG781607104
Description LABORATORY GROWN DIAMOND
Shape and Cutting Style ROUND BRILLIANT
Measurements 7.29 - 7.32 X 4.55 MM
GRADING RESULTS
Carat Weight 1.51 CARAT
Color Grade D
Clarity Grade VVS 2
Cut Grade IDEAL

PROPORTIONS



Sample Image Used



ADDITIONAL GRADING INFORMATION

Polish EXCELLENT
Symmetry EXCELLENT
Fluorescence NONE
Inscription(s) IGI LG781607104

Comments: As Grown - No indication of post-growth treatment. This Laboratory Grown Diamond was created by High Pressure High Temperature (HPHT) growth process. Type II

COLOR

D E F G H I J Faint Very Light Light

CLARITY

FL IF VS 1-2 VS 1-2 SI 1-2 I 1-3
Flawless Internally Flawless Very Very Slightly Included Very Slightly Included Slightly Included Included

ADDITIONAL GRADING INFORMATION

Polish EXCELLENT
Symmetry EXCELLENT
Fluorescence NONE
Inscription(s) IGI LG781607104
Comments: As Grown - No indication of post-growth treatment. This Laboratory Grown Diamond was created by High Pressure High Temperature (HPHT) growth process. Type II



IGI



March 28, 2026
IGI Report No LG781607104
ROUND BRILLIANT
7.29 - 7.32 X 4.55 MM
1.51 CARAT
Color Grade D
Clarity Grade VVS 2
Cut Grade IDEAL
Depth 62.3%
Table 57%
Girdle Medium To Slightly Thick (Faceted)
Culet Pointed
Polish EXCELLENT
Symmetry EXCELLENT
Fluorescence NONE
Inscriptions(s) IGI LG781607104
Comments: As Grown - No indication of post-growth treatment. This Laboratory Grown Diamond was created by High Pressure High Temperature (HPHT) growth process. Type II