



ELECTRONIC COPY

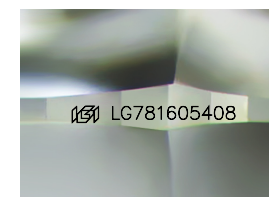
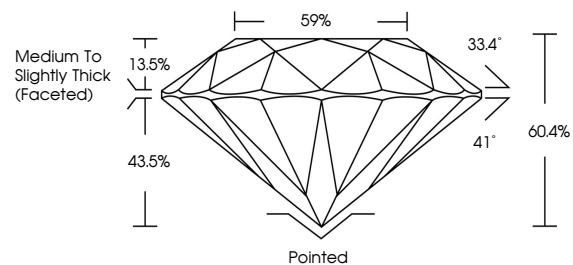
LG781605408
Report verification at igi.org



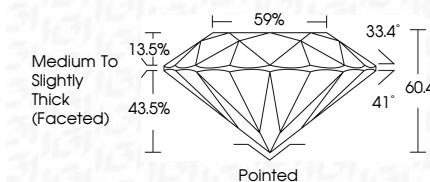
March 16, 2026
IGI Report Number LG781605408
Description LABORATORY GROWN DIAMOND
Shape and Cutting Style ROUND BRILLIANT
Measurements 8.01 - 8.03 X 4.84 MM
GRADING RESULTS
Carat Weight 1.89 CARAT
Color Grade E
Clarity Grade VVS 2
Cut Grade IDEAL

March 16, 2026
IGI Report Number LG781605408
Description LABORATORY GROWN DIAMOND
Shape and Cutting Style ROUND BRILLIANT
Measurements 8.01 - 8.03 X 4.84 MM
GRADING RESULTS
Carat Weight 1.89 CARAT
Color Grade E
Clarity Grade VVS 2
Cut Grade IDEAL

PROPORTIONS



Sample Image Used



ADDITIONAL GRADING INFORMATION

Polish EXCELLENT
Symmetry EXCELLENT
Fluorescence NONE
Inscription(s) IGI LG781605408

Comments: This Laboratory Grown Diamond was created by Chemical Vapor Deposition (CVD) growth process. Type IIa

ADDITIONAL GRADING INFORMATION

Polish EXCELLENT
Symmetry EXCELLENT
Fluorescence NONE
Inscription(s) IGI LG781605408
Comments: This Laboratory Grown Diamond was created by Chemical Vapor Deposition (CVD) growth process. Type IIa

COLOR

D E F G H I J Faint Very Light Light

CLARITY

FL IF VS 1-2 VS 1-2 SI 1-2 I 1-3
Flawless Internally Flawless Very Very Slightly Included Very Slightly Included Slightly Included Included



IGI



March 16, 2026
IGI Report No LG781605408
ROUND BRILLIANT
1.89 CARAT E
8.01 - 8.03 X 4.84 MM
Carat Weight
Color Grade VVS 2
Clarity Grade IDEAL
Depth 60.4%
Table 59%
Girdle Medium To Slightly Thick (Faceted)
Culet Pointed
Polish EXCELLENT
Symmetry EXCELLENT
Fluorescence NONE
Inscriptions(s) IGI LG781605408
Comments: This Laboratory Grown Diamond was created by Chemical Vapor Deposition (CVD) growth process. Type IIa