



March 11, 2026

IGI Report Number LG781605373
**CUT CORNERED RECTANGULAR
MODIFIED BRILLIANT**
LABORATORY GROWN DIAMOND
5.77 X 3.78 X 2.56 MM

Carat Weight **0.50 CARAT**
Color Grade **D**
Clarity Grade **VVS 2**
Polish **VERY GOOD**
Symmetry **VERY GOOD**
Fluorescence **NONE**
Inscription(s) **IGI LG781605373**

Comments: This Laboratory Grown Diamond was created by Chemical Vapor Deposition (CVD) growth process. Type IIa

LABORATORY GROWN DIAMOND REPORT

March 11, 2026

IGI Report Number

LG781605373

Description

LABORATORY GROWN DIAMOND

Shape and Cutting Style

**CUT CORNERED RECTANGULAR MODIFIED
BRILLIANT**

Measurements

5.77 X 3.78 X 2.56 MM

GRADING RESULTS

Carat Weight

0.50 CARAT

Color Grade

D

Clarity Grade

VVS 2

ADDITIONAL GRADING INFORMATION

Polish

VERY GOOD

Symmetry

VERY GOOD

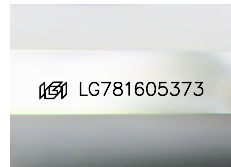
Fluorescence

NONE

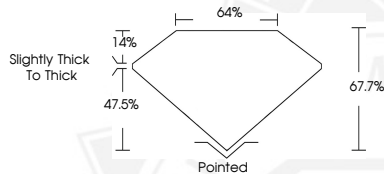
Inscription(s)

IGI LG781605373

Comments: This Laboratory Grown Diamond was created by Chemical Vapor Deposition (CVD) growth process. Type IIa



Sample Image Used



March 11, 2026

IGI Report Number LG781605373
**CUT CORNERED RECTANGULAR
MODIFIED BRILLIANT**
LABORATORY GROWN DIAMOND
5.77 X 3.78 X 2.56 MM

Carat Weight **0.50 CARAT**
Color Grade **D**
Clarity Grade **VVS 2**
Polish **VERY GOOD**
Symmetry **VERY GOOD**
Fluorescence **NONE**
Inscription(s) **IGI LG781605373**

Comments: This Laboratory Grown Diamond was created by Chemical Vapor Deposition (CVD) growth process. Type IIa



THIS DOCUMENT WAS PRODUCED WITH THE FOLLOWING SECURITY MEASURES: SPECIAL DOCUMENT PAPER, INK SCREENS, WATERMARK, BACKGROUND DESIGNS, HOLOGRAM AND OTHER SECURITY FEATURES NOT LISTED AND DO EXCEED DOCUMENT SECURITY INDUSTRY GUIDELINES.