



**ELECTRONIC COPY**

LG781605227  
Report verification at igi.org



March 17, 2026  
IGI Report Number **LG781605227**  
Description **LABORATORY GROWN DIAMOND**  
Shape and Cutting Style **CUSHION MODIFIED BRILLIANT**  
Measurements **10.68 X 8.01 X 5.58 MM**  
**GRADING RESULTS**  
Carat Weight **4.24 CARATS**  
Color Grade **FANCY INTENSE YELLOW**  
Clarity Grade **VVS 2**

March 17, 2026  
IGI Report Number **LG781605227**  
Description **LABORATORY GROWN DIAMOND**  
Shape and Cutting Style **CUSHION MODIFIED BRILLIANT**  
Measurements **10.68 X 8.01 X 5.58 MM**

**GRADING RESULTS**

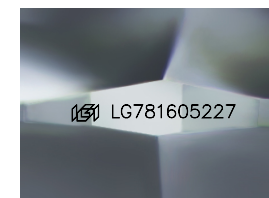
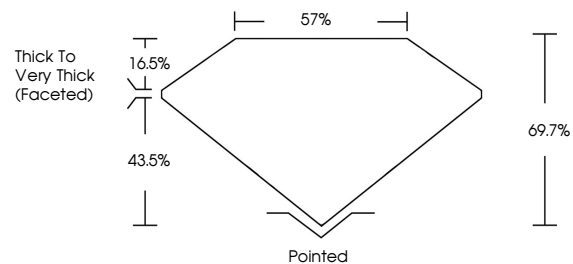
Carat Weight **4.24 CARATS**  
Color Grade **FANCY INTENSE YELLOW**  
Clarity Grade **VVS 2**

**ADDITIONAL GRADING INFORMATION**

Polish **EXCELLENT**  
Symmetry **EXCELLENT**  
Fluorescence **NONE**  
Inscription(s) **IGI LG781605227**

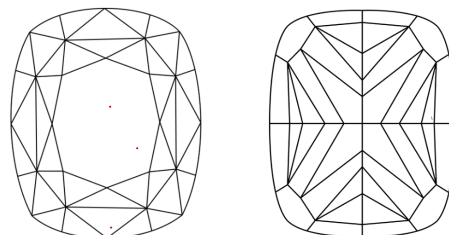
Comments: This Laboratory Grown Diamond was created by Chemical Vapor Deposition (CVD) growth process.

**PROPORTIONS**



Sample Image Used

**CLARITY CHARACTERISTICS**



**KEY TO SYMBOLS**

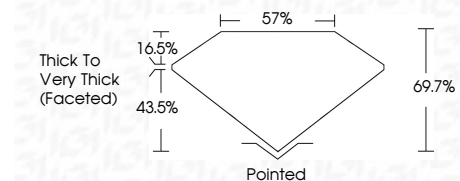
Red symbols indicate internal characteristics.  
Green symbols indicate external characteristics.

**COLOR**

D E F G H I J Faint Very Light Light

**CLARITY**

FL	IF	VVS <sup>1-2</sup>	VS <sup>1-2</sup>	SI <sup>1-2</sup>	I <sup>1-3</sup>
Flawless	Internally Flawless	Very Very Slightly Included	Very Slightly Included	Slightly Included	Included



**ADDITIONAL GRADING INFORMATION**

Polish **EXCELLENT**  
Symmetry **EXCELLENT**  
Fluorescence **NONE**  
Inscription(s) **IGI LG781605227**  
Comments: This Laboratory Grown Diamond was created by Chemical Vapor Deposition (CVD) growth process.



March 17, 2026  
IGI Report No LG781605227  
**CUSHION MODIFIED BRILLIANT**  
**4.24 CARATS**  
Carat Weight **FANCY INTENSE YELLOW**  
Color Grade **VVS 2**  
Clarity Grade **69.7%**  
Depth **57%**  
Table  
Girdle  
Culet  
Pointed  
Polish **EXCELLENT**  
Symmetry **EXCELLENT**  
Fluorescence **NONE**  
Inscription(s) **IGI LG781605227**  
Comments: This Laboratory Grown Diamond was created by Chemical Vapor Deposition (CVD) growth process.