



**ELECTRONIC COPY**

LG781605226  
Report verification at igi.org



March 17, 2026  
IGI Report Number **LG781605226**  
Description **LABORATORY GROWN DIAMOND**  
Shape and Cutting Style **CUT CORNERED  
RECTANGULAR MODIFIED  
BRILLIANT**  
Measurements **11.49 X 8.05 X 5.50 MM**  
**GRADING RESULTS**  
Carat Weight **4.87 CARATS**  
Color Grade **FANCY INTENSE YELLOW**  
Clarity Grade **VS 1**

**LABORATORY GROWN DIAMOND REPORT**

March 17, 2026  
IGI Report Number **LG781605226**  
Description **LABORATORY GROWN DIAMOND**  
Shape and Cutting Style **CUT CORNERED RECTANGULAR  
MODIFIED BRILLIANT**  
Measurements **11.49 X 8.05 X 5.50 MM**

**GRADING RESULTS**

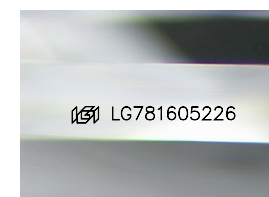
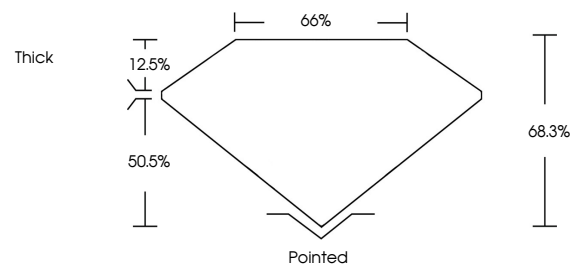
Carat Weight **4.87 CARATS**  
Color Grade **FANCY INTENSE YELLOW**  
Clarity Grade **VS 1**

**ADDITIONAL GRADING INFORMATION**

Polish **EXCELLENT**  
Symmetry **EXCELLENT**  
Fluorescence **NONE**  
Inscription(s) **IGI LG781605226**

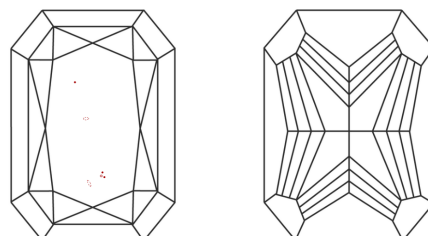
Comments: This Laboratory Grown Diamond was created by Chemical Vapor Deposition (CVD) growth process.

**PROPORTIONS**



Sample Image Used

**CLARITY CHARACTERISTICS**



**KEY TO SYMBOLS**

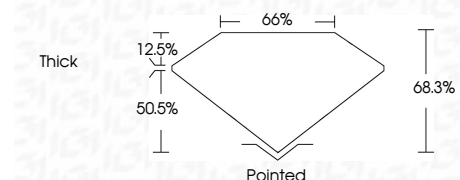
Red symbols indicate internal characteristics.  
Green symbols indicate external characteristics.

**COLOR**

D E F G H I J Faint Very Light Light

**CLARITY**

FL	IF	VS <sup>1-2</sup>	VS <sup>1-2</sup>	SI <sup>1-2</sup>	I <sup>1-3</sup>
Flawless	Internally Flawless	Very Very Slightly Included	Very Slightly Included	Slightly Included	Included



**ADDITIONAL GRADING INFORMATION**

Polish **EXCELLENT**  
Symmetry **EXCELLENT**  
Fluorescence **NONE**  
Inscription(s) **IGI LG781605226**  
Comments: This Laboratory Grown Diamond was created by Chemical Vapor Deposition (CVD) growth process.



March 17, 2026  
IGI Report No LG781605226  
CUT CORNERED RECT. MODIFIED BRILLIANT  
11.49 X 8.05 X 5.50 MM  
4.87 CARATS  
FANCY INTENSE YELLOW  
VS 1  
68.3%  
50.5%  
Thick  
Pointed  
EXCELLENT  
EXCELLENT  
NONE  
IGI LG781605226  
Comments: This Laboratory Grown Diamond was created by Chemical Vapor Deposition (CVD) growth process.