



ELECTRONIC COPY

LG781604579 Report verification at igi.org



March 9, 2026 IGI Report Number LG781604579 Description LABORATORY GROWN DIAMOND Shape and Cutting Style CUT CORNERED RECTANGULAR MODIFIED BRILLIANT Measurements 9.19 X 6.27 X 4.19 MM GRADING RESULTS Carat Weight 2.10 CARATS Color Grade D Clarity Grade VS 2

March 9, 2026 IGI Report Number LG781604579 Description LABORATORY GROWN DIAMOND Shape and Cutting Style CUT CORNERED RECTANGULAR MODIFIED BRILLIANT Measurements 9.19 X 6.27 X 4.19 MM

GRADING RESULTS

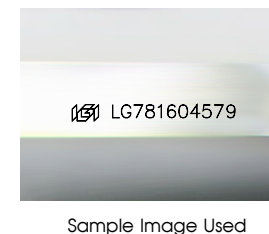
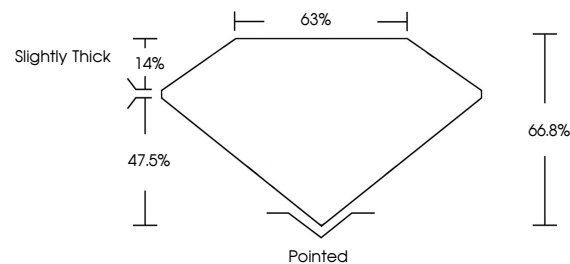
Carat Weight 2.10 CARATS Color Grade D Clarity Grade VS 2

ADDITIONAL GRADING INFORMATION

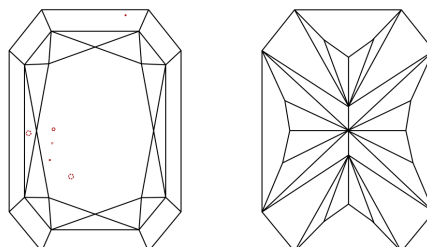
Polish EXCELLENT Symmetry EXCELLENT Fluorescence NONE Inscription(s) LG781604579

Comments: This Laboratory Grown Diamond was created by Chemical Vapor Deposition (CVD) growth process. Type IIa

PROPORTIONS



CLARITY CHARACTERISTICS



KEY TO SYMBOLS

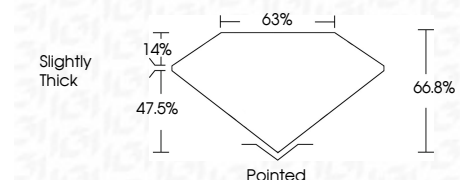
Red symbols indicate internal characteristics. Green symbols indicate external characteristics.

COLOR

D E F G H I J Faint Very Light Light

CLARITY

FL IF VS 1-2 VS 1-2 SI 1-2 I 1-3 Flawless Internally Flawless Very Very Slightly Included Very Slightly Included Slightly Included Included



ADDITIONAL GRADING INFORMATION

Polish EXCELLENT Symmetry EXCELLENT Fluorescence NONE Inscription(s) LG781604579 Comments: This Laboratory Grown Diamond was created by Chemical Vapor Deposition (CVD) growth process. Type IIa



March 9, 2026 IGI Report No LG781604579 CUT CORNERED RECT. MODIFIED BRILLIANT 2.10 CARATS D 9.19 X 6.27 X 4.19 MM VS 2 66.8% 63% Slightly Thick Pointed EXCELLENT EXCELLENT NONE NONE LG781604579 Comments: This Laboratory Grown Diamond was created by Chemical Vapor Deposition (CVD) growth process. Type IIa