



**INTERNATIONAL
GEMOLOGICAL
INSTITUTE**

ELECTRONIC COPY

LABORATORY GROWN DIAMOND REPORT

March 11, 2026
 IGI Report Number **LG781604408**
 Description **LABORATORY GROWN DIAMOND**
 Shape and Cutting Style **PEAR BRILLIANT**
 Measurements **7.09 X 4.28 X 2.55 MM**

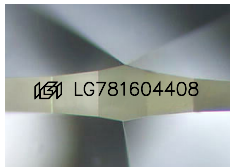
GRADING RESULTS

Carat Weight **0.43 CARAT**
 Color Grade **D**
 Clarity Grade **INTERNALLY FLAWLESS**

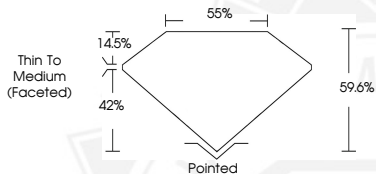
ADDITIONAL GRADING INFORMATION

Polish **EXCELLENT**
 Symmetry **EXCELLENT**
 Fluorescence **NONE**
 Inscription(s) **IGI LG781604408**

Comments: This Laboratory Grown Diamond was created by Chemical Vapor Deposition (CVD) growth process. Type IIa



Sample Image Used



March 11, 2026
 IGI Report Number **LG781604408**
PEAR BRILLIANT
LABORATORY GROWN DIAMOND
7.09 X 4.28 X 2.55 MM
 Carat Weight **0.43 CARAT**
 Color Grade **D**
 Clarity Grade **I.F.**
 Polish **EXCELLENT**
 Symmetry **EXCELLENT**
 Fluorescence **NONE**
 Inscription(s) **IGI LG781604408**

Comments: This Laboratory Grown Diamond was created by Chemical Vapor Deposition (CVD) growth process. Type IIa



March 11, 2026
 IGI Report Number **LG781604408**
PEAR BRILLIANT
LABORATORY GROWN DIAMOND
7.09 X 4.28 X 2.55 MM
 Carat Weight **0.43 CARAT**
 Color Grade **D**
 Clarity Grade **I.F.**
 Polish **EXCELLENT**
 Symmetry **EXCELLENT**
 Fluorescence **NONE**
 Inscription(s) **IGI LG781604408**

Comments: This Laboratory Grown Diamond was created by Chemical Vapor Deposition (CVD) growth process. Type IIa



THIS DOCUMENT WAS PRODUCED WITH THE FOLLOWING SECURITY MEASURES: SPECIAL DOCUMENT PAPER, INK SCREENS, WATERMARK, BACKGROUND DESIGNS, HOLOGRAM AND OTHER SECURITY FEATURES NOT LISTED AND DO EXCEED DOCUMENT SECURITY INDUSTRY GUIDELINES.

For terms & conditions and to verify this report, please visit www.igi.org