



March 12, 2026

IGI Report Number LG781604376
ROUND BRILLIANT
LABORATORY GROWN DIAMOND
5.67 - 5.70 X 3.49 MM

0.69 CARAT
G
VVS 2
IDEAL
EXCELLENT
EXCELLENT
NONE
IGI LG781604376

Comments: As Grown - No indication of post-growth treatment. This Laboratory Grown Diamond was created by High Pressure High Temperature (HPHT) growth process. Type II Faint Blue

LABORATORY GROWN DIAMOND REPORT

March 12, 2026
IGI Report Number **LG781604376**
Description **LABORATORY GROWN DIAMOND**
Shape and Cutting Style **ROUND BRILLIANT**
Measurements **5.67 - 5.70 X 3.49 MM**

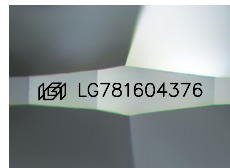
GRADING RESULTS

Carat Weight **0.69 CARAT**
Color Grade **G**
Clarity Grade **VVS 2**
Cut Grade **IDEAL**

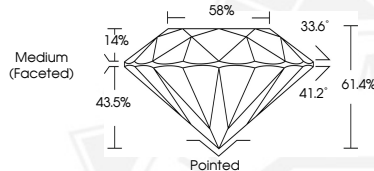
ADDITIONAL GRADING INFORMATION

Polish **EXCELLENT**
Symmetry **EXCELLENT**
Fluorescence **NONE**
Inscription(s) **IGI LG781604376**

Comments: As Grown - No indication of post-growth treatment. This Laboratory Grown Diamond was created by High Pressure High Temperature (HPHT) growth process. Type II Faint Blue



Sample Image Used



March 12, 2026

IGI Report Number LG781604376
ROUND BRILLIANT
LABORATORY GROWN DIAMOND
5.67 - 5.70 X 3.49 MM

0.69 CARAT
G
VVS 2
IDEAL
EXCELLENT
EXCELLENT
NONE
IGI LG781604376

Comments: As Grown - No indication of post-growth treatment. This Laboratory Grown Diamond was created by High Pressure High Temperature (HPHT) growth process. Type II Faint Blue



THIS DOCUMENT WAS PRODUCED WITH THE FOLLOWING SECURITY MEASURES: SPECIAL DOCUMENT PAPER, INK SCREENS, WATERMARK, BACKGROUND DESIGNS, HOLOGRAM AND OTHER SECURITY FEATURES NOT LISTED AND DO EXCEED DOCUMENT SECURITY INDUSTRY GUIDELINES.